



NO MINIMUM ★ NO RESERVE

PUBLIC AUCTION



PACIFIC GAS & ELECTRIC

Hertz
Equipment Rental

United Rentals

Over 35 Bay Area Government Agencies

3 AUCTION RINGS – ONE DAY
CONSTRUCTION EQUIPMENT ★ TRUCKS ★ GOV'T FLEET VEHICLES
★ ASSET SEIZURES ★ REAL ESTATE



JOHN DEERE 672B MOTOR GRADER



CATERPILLAR D5H CRAWLER TRACTOR



ASSORTED BUCKET AND LINE TRUCKS



SNO-CAT 2000 ARCTIC CRAWLER

BID ONSITE OR ONLINE!

SATURDAY, SEPTEMBER 18, 2010 AT 9:00 A.M.
50 SOLANO AVENUE, VALLEJO, CALIFORNIA ★ SAN FRANCISCO BAY AREA

INSPECTION: FRIDAY, SEPTEMBER 17, 2010, 9:00 A.M. TO 4:30 P.M.



FIRST CAPITOL AUCTION INC.

COMMERCIAL LIQUIDATORS & APPRAISERS

LIVE INTERNET BIDDING
Available Through **proxibid™**

Phone (707) 552-0739
Fax (707) 552-8613
50 Solano Ave., Vallejo, CA 94590
Visit our Website at www.1stcapitolauction.com
e-mail: auctioncap@aol.com
BOND #14663700622 • CSL #A1621

SATURDAY, SEPTEMBER 18, 2010 AT 9:00 A.M.—3 RINGS

RING 1: CONSTRUCTION EQUIPMENT ★ LARGE TRUCKS



ONLY
1,500 HRS

**JOHN DEERE 750B
CRAWLER TRACTOR**



**JOHN DEERE 310G 4X4
BACKHOE LOADER**



FROM
240 HRS

**(3) JOHN DEERE 4X4
UTILITY TRACTORS**



ONLY
395 HRS

LMC 1800 SNOW CAT



1 OF 2

**CATERPILLAR XQ 225
TOWABLE GEN SETS**



1 OF 10

RIDE-ON MOWERS

RING 1: CONSTRUCTION EQUIP. & ARCTIC SNOW CATS

JOHN DEERE 672B Motor Grader, 12' mold board, 3-shank single-barrel rippers, Henke snow blade, enclosed cab, 3,260 hours, s/n DW672BX525766.

CATERPILLAR D5H Series II High Track Crawler Tractor, 6-way S-blade, Hyster W5B winch, EROPS, 1,710 hours, s/n 8RC04086.

JOHN DEERE 750B Crawler Tractor, 4-way S-blade, Carco 50A winch, OROPS, 1,516 hours, s/n T0750-BC741500.

JOHN DEERE 400G Crawler Tractor, 4-way S-blade, John Deere winch, OROPS, sweeps, 1,642 hours, s/n T04-00GC771226.

1996 SNO CAT 2000D-28-6, diesel eng., A/T, snow blade, 561 hours, s/n 20964199.

LMC 1800 Snow Cat, diesel eng., A/T, snow blade, 395 hours, s/n L4E-5580140.

JOHN DEERE 310G 4X4 Backhoe Loader, 4-in-1 bucket, extendahoe, stick controls, 2,357 hours, s/n T03-10GX901886.

(2) CASE 580 Super K Backhoe Loaders, 4-in-1 bucket, extendahoe.

2001 FERMEC 650B 4X4 Skip Loader, GP bucket, Gannon box, s/n F01-6DN0656.

(3) JOHN DEERE 3520 and 3320 Utility Tractors, 300 CX GP bucket, 3pt hitch, only 240 to 1,598 hours, s/n 130667, 130664, s/n 150981.

DAEWOO Mini Excavator, rubber tracks, backfill blade, plumbed for aux.

2005 JOHN DEERE 317 Skid Steer Loader, flotation tires, plumbed for aux, s/n T00317A113461.

BOBCAT 773 Skid Steer Loader, flotation tires, plumbed for aux.

BOBCAT 753 Skid Steer Loader, flotation tires, w/709 backhoe attachment.

MUSTANG 2040 Skid Steer Loader, flotation tires.

CATERPILLAR 247 Track Skid Loader, plumbed for aux.

2005 TERRAMITE T5C Compact Backhoe 20-29 Hp., gasoline, 2WD.

CASE 580 Construction King Skip Loader, GP bucket, 3pt hitch.

2004 KENT KF 9 FSP Backhoe Breaker.

JOHN DEERE 3Pt Tiller Attachments.

GEN SETS & SUPPORT EQUIP.

(2) 1999 CATERPILLAR XQ225 Towable Gen Sets, Caterpillar 330 diesel eng., 225 kw.

2007 MAGNUM PRO MMG80 Towable Gen Set, diesel eng., 70-84 kva, s/n 68472.

2005 MAGNUM PRO MMG35 Towable Gen Set, diesel eng., 30-39 kva, s/n 53878, s/n 53011.

MULTIQUIP Towable Gen Set, diesel eng., 3.5-3.9 kw.

(2) 1996 GENIE S40 Boom Lifts, 2WD dual fuel, 3585 and 4833 hours, s/n 555, s/n 572.

2007 GENIE SLC-24 Material Lift.

(4) GENIE Material Lifts, 24'-25'.

(8) 2004-1996 Forklifts, call for info.

(5) SOLAR TEC Silent Sentinel Towable Solar Powered Sign Board.

2004 MILLER Big Blue 400D Arc Welder, 400 amp, s/n LE136892.

2003 MULTIQUIP BLW400SS Arc Welder, 400 amp.

INGERSOLL-RAND 160 CFM Towable Air Compressor, John Deere diesel eng.

Asst. MULTIQUIP Pumps, Portable Generators, and Welders.

LANDSCAPING EQUIP.

2005 VERMEER RT100 Walk-Behind Trencher, 11-15 hp., s/n 1VRX051E651001449.

2003 BARRETTO 1324D Walk-Behind Trencher, 11-15 hp., s/n D2399.

DITCHWITCH Walk-Behind Trencher, 11 hp.

2006 GROUNDHOG T-4-HS18 Trencher, 5 hp., s/n 8995.

VERMEER T-300 Root Cutter.

JOHN DEERE 1600 Turbo Ride-On Mower, diesel eng., 2,814 hours.

(2) 2007-2006 Toro 4100D 4X4 Ride-On Mowers, diesel eng., 1,535 and 1,825 hours.

2006 TORO 3280-D 4X4 Ride-On Mower, diesel eng., 1,325 hours.

2006 TORO 225 Ground Master Ride-On Mower, gas eng.

2007 TORO 2 Master Commercial Ride-On Mower, diesel eng., 1,116 hours.

JACOBSEN Turfcut 628D Ride-On Mower, diesel eng., hydro drive, 1,815 hours.

(2) EX MARK Lazer XP Ride-On Mowers, diesel eng., 1,772 and 1,995 hours.

(5) MAXIM Walk-Behind Tillers, 5 hp.

LARGE TRUCKS

2001 VOLVO WHITE 3-Axle Truck Tractor, Cummins ISML diesel eng., 10-speed trans., wet kit, sliding 5th wheel.

2005 FREIGHTLINER Business Class M2 Box Van, Caterpillar diesel eng., A/T w/ Morgan 25' box, roll-up door/ramp.

2004 FREIGHTLINER Business Class M2 Box Van, Caterpillar diesel eng., A/T w/ Dailey 25' box, roll-up door/step.

2001 FORD Super Duty Dump Truck, gas eng., 4-speed trans, w/Dayco electric flatbed dump body.

2000 CHEVROLET 3500 HD Dump Truck, gas eng., A/T, w/Cooks electric flatbed dump body.

2001 FORD F-350 Dump Truck, gas eng., A/T, w/Rugby electric flatbed dump body.



ONLY
1,650 HRS

**JOHN DEERE 400G
CRAWLER TRACTOR**



2005

**JOHN DEERE 317
SKID STEER LOADER**



2005
-04

FREIGHTLINER M2 BOX VANS



**SIMON & SEAGRAVE
LADDER TRUCKS**



ONLY
15,500 MILES

**FORD F SERIES COLET
AIR SUPPLY TRUCK**



1 OF 10
2006-02

**MCCLINTOCK CMT-100 CONCRETE
MIXER TRAILERS**

**GOVERNMENT ENDORSED PUBLIC AUCTION!
EVERYTHING SELLS TO THE HIGHEST BIDDER!**



**FIRST CAPITOL
AUCTION INC.**
COMMERCIAL LIQUIDATORS & APPRAISERS

SELLING EQUIPMENT—CALL US TODAY!
(707) 552-0739

(3) 2000–1989 GMC 3500 HD Dump Truck, gas eng., A/T, w/Knapheide dump body.

1989 FORD F-Super Duty Custom Oxygen Truck, 7.5 liter gas eng., auto trans., Colet/Beaver TAC-20-E3 life support oxygen refill unit, only 15,500 miles!

1989 SIMON Spartan Ladder Truck, Detroit diesel eng., A/T, retarder, w/ QS110 Quadrea Stix 110' aerial ladder, 1,000 GPM, water tower, 86,800 miles.

1988 SEAGRAVE Ladder Truck, Detroit diesel eng., A/T, retarder, w/Firetec Seagrave 100' aerial ladder, Imperial water cannon.

2002 FREIGHTLINER Sweeper Truck.

2005 SCHWARZE Sweeper Truck.

BUCKET & LINE TRUCKS

2002 FREIGHTLINER FL80 4X4 Bucket Truck, diesel eng., auto trans., outriggers, w/Altec AM855 boom, only 75,500 miles!

2004 FORD F-550 4X4 Bucket Truck, diesel eng., auto trans., w/Hi Ranger TL38P boom.

1995 FORD F-Series Double Bucket Truck, diesel eng., auto trans., w/Altec AM755H boom, only 70,000 miles!

2000 FORD F-450 Super Duty Utility Bucket Truck, V-10 gas eng., A/T, w/Telsta A28D boom.

2001 GMC 3500 HD Utility Bucket Truck, gas eng., A/T, w/Altec 30.6' boom.

(9) 1993 GMC C3500 Bucket Trucks, w/Telsta A28D boom.

(9) 1996 FORD F-450 and F-Series Bucket Trucks, w/Telsta A28D booms.

**TRAILERS, MISC. RENTAL EQUIP.,
POWER TOOLS, & SUPPLIES**

(10) MCCLINTOCK and U-CART Concrete Trailers, MILLERBILT Car Trailer, (2) 5' x 10' Furniture Trailers, MILLERBILT Tow Dolly, (2) 10' 2-Axle Cargo Trailers, TENNANT Ride-On Floor Scrubber, Solar Battery Charger, (12) MULTIQUIP Mikasa Tampers, (2) MIKASA Plate Compactors, Towable Aerator, WHITEMAN Concrete Finisher, EDCO Chipping Guns, EDCO Walk-

Behind Saws, ICS Concrete Chain Saw, OUTBACK Brush Cutter, Builder's Transit Level, Fans, Bulk Snakes, Lawn Mowers, Ladders, Concrete Saws, Carpet Stretchers, Lawn Rollers, Oil Waste Oil Drum, Tiller Trailers, Appliance Dollies, Parts Washers, UNDER-WONDER H55 Horizontal Boring Unit, (15) Pallets of Floor Pavers, Table Saw, Concrete Saws, Metal Chop Saw, Misc. Sanders, (2) 2010 EASY KLEEN Magnum Gold Hot Water Pressure Washers, (5) MULTIQUIP Mortar Mixers, Pressure Washers.

New & Unused Power Tools: (2) MUSTANG 6500 DP Silent Diesel Generators, (2) MUSTANG LF 88 Plate Compactors, MUSTANG ML 80 Jumping Jack, (2) MUSTANG VC 3500 Concrete Vibrators, (2) MUSTANG MP 4800 2" Submersible Pumps, (3) STIFF NECK Pintle Hitches, 4-Pack 10,000-Lb. Ratchet Cargo Straps, 1" Drive Air Impact Wrenches, (2) ½" Drive Air Impact Wrench Kits, 3-Pc. Air Spray Gun Kit, (3) 3-Pc. 14" Premium Diamond Blades.

**RING 2: OVER 300 GOV'T FLEET VEHICLES ★ LIGHT TRUCKS
★ MOTORCYCLES ★ REAL ESTATE STARTS AT 11:00 A.M.**
(After Construction Equipment & Trucks)



FLEET VEHICLES



LIGHT TRUCKS



(5) HARLEY-DAVIDSON
MOTORCYCLES



FLEET VEHICLES

GOV'T FLEET VEHICLES, LIGHT TRUCKS, & ASSET SEIZURES

Over (300) Government Fleet Vehicles Including: (20) FORD Crown Victorias, 2003 CHEVROLET Cavalier, (2) 2001–2000 TOYOTA Camry LE, CHEVROLET Corsicas, CHEVROLET Suburbans, FORD Tempos, FORD Tauruses, CHEVROLET Celebrities, OLDSMOBILE Achievas, CHEVROLET Caprices, PONTIAC Grand Ams, Impalas, Intrepids. More, too many to list all!

Pickup Trucks: Including (25) 2000–1998 GMC Sierra 3500-1500 Pickup Trucks, (4) 2004–2000 FORD Ranger 4X4 Pickups, (3) 1999 FORD F-150 4X4 Pickup, 1990 DODGE 4X4 W-350 Cab and Chassis Utility Bed, 1996 GMC Sonoma Pickup Truck, (10) 2005–1999 CHEVROLET Silverado Pickups.

Vans: (35) 2001–1996 GMC Safari and Sierra Cargo and Passenger Vans, 2002 FORD Windstar LX Passenger Van, (12) FORD and GMC Cargo Vans.

Motorcycles & Utility Vehicles: (5) 2005–1999 HARLEY-DAVIDSON FLHPI Road King Motorcycles, from 13,752 miles!
(2) SUZUKI DR350 Motorcycles; 1982 KAWASAKI Motorcycle; (3) FORD Think Electric Utility Carts.

BUSES BY SEALED BID

Bids Are Invited for Purchase of: (2) 1990 FLEXIBLE Metro Buses, diesel eng. (Out of State); 1995 FLEXIBLE Metro Bus, CNG; 1995 FORD E-350 Cut-Away Turtle Top Bus, diesel eng.; and 1998 ORION V Bus, CNG.

Location: 10250 Iron Rock Way, Elk Grove, CA 95624
Inspection: Monday & Tuesday, September 13 & 14, 2010
(Please Call to Arrange an Appointment)

Deadline for sealed bids: Saturday, September 18, 2010 at 12:00 P.M.
Late bids will not be considered.



All bids must be submitted to First Capitol Auction, Inc. at 50 Solano Ave., Vallejo, CA, 94590 or fax to 707-552-8613.

RING 3 STARTS AT 10:30 A.M.



**SCORE A TOUCHDOWN!
HELP FIRST CAPITOL
AUCTION
GO GREEN!**

LEAVE US YOUR EMAIL ADDRESS
AND HELP YOUR ENVIRONMENT.
Printed on Recycled Paper With Soy Based Inks.

Complete Terms & Conditions Available Day of Sale!
Can't Be Here? Go to Our Website & Click on the Proxibid Link or Leave an Absentee Bid.
www.1stcapitolauction.com



FIRST CAPITOL AUCTION INC.

COMMERCIAL LIQUIDATORS & APPRAISERS

For more information call (707) 552-0739

FIRST CAPITOL AUCTION INC.

50 Solano Ave., Vallejo, CA 94590

Visit our Website at www.1stcapitolauction.com

or e-mail us at: auktioncap@aol.com

Liquidators & Appraisers

CSL #A1621

NO MINIMUM ★ NO RESERVE

PUBLIC AUCTION

PACIFIC GAS & ELECTRIC



Hertz



United Rentals

Over 35 Bay Area Government Agencies

SATURDAY, SEPTEMBER 18, 2010

AT 9:00 A.M.

3 AUCTION RINGS – ONE DAY

CONSTRUCTION EQUIPMENT ★ TRUCKS ★ GOV'T FLEET VEHICLES ★ ASSET SEIZURES ★ REAL ESTATE

INSPECTION: FRIDAY, SEPTEMBER 17, 2010

9:00 A.M. TO 4:30 P.M.

VALLEJO, CALIFORNIA – AUCTION HELD RAIN OR SHINE!

DATED MATERIAL – PLEASE DELIVER

QS-0005963

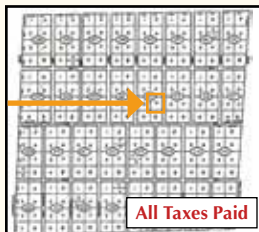


Presorted
First Class Mail
U.S. Postage
PAID
Eugene, Oregon
Permit No. 17

NO MINIMUM ★ NO RESERVE

REAL ESTATE PROPERTY AUCTION

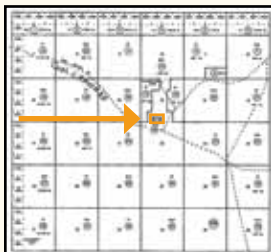
Inspection Will Be Available the Week of
September 13–17



PROPERTY 1
– 2 Acres
Madison Ave.
Twin River
Ranchos

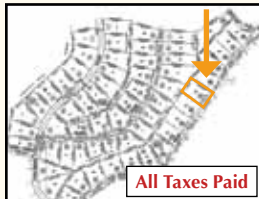
Unit 3; Lot 7; Block 20;
APN #025-020-007
Elko County, NV

All Taxes Paid



PROPERTY 4
– 20± Acres
The S/2, SE/4, SW/4,
Section 15

T27N; R33E; APN #15-060-18
Pershing County, NV



PROPERTY 2
– 1 Acre
Buckboard Rd.
California Pines

Lot 32; Block 21;
APN #035-103-2711
Modoc County, CA

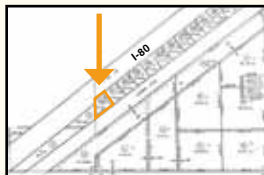
All Taxes Paid



PROPERTY 3 – 1 Lot
Jacaranda Ave.
California City

Tract 2317; Block 322;
APN #211-161-26-00-8
Kern County, CA

All Taxes Paid



PROPERTY 7 – 5 Acres, Lot 1
Zone Industrial, Section 17, T26N R31E

APN #007-411-20
Pershing County, NV

**Real Estate Lots to Be Sold at
the First Capitol Auction Facility
Before the Fleet Vehicles
Approximately 11:00 A.M.**

**PROPERTY 5 –
40± Acres, Lot 9
Section 17, T28N R30E**

APN #003-660-09
Pershing County, NV

**PROPERTY 6 –
40± Acres, Lot 11
Section 17, T28N R30E**

APN #003-660-11
Pershing County, NV

