

2-DAY

FIRST CAPITOL AUCTION INC.

Northern California's Leading Auction Company

MULTI MILLION DOLLAR ★ NO MINIMUM ★ NO RESERVE

PUBLIC AUCTION

FRIDAY & SATURDAY, APRIL 21 & 22 AT 9:00 A.M.

50 Solano Avenue, Vallejo, California, San Francisco Bay Area

Bay Area Contractors ★ Herc Rents ★ Over 35 Gov't Agencies & Municipalities

DAY 1: FRIDAY, APRIL 21 AT 9:00 A.M.

★ Late-Model Construction, Rental Equipment, Large Trucks, Trailers & More ★



MINI EXCAVATORS



2013 FORD EXPLORERS,
(OVER 350) GOVERNMENT FLEET VEHICLES



DUMP & TRANSFER TRUCKS



2016
BOBCAT S530
SKID STEER
LOADER



CASE 580 SUPER M 4X4
BACKHOE LOADER



COMPACTION
EQUIPMENT



DUMP AND TRANSFER TRUCKS



FORKLIFTS



GOVERNMENT VAC
AND SWEEPER TRUCKS

DAY 2: SATURDAY, APRIL 22 AT 9:00 A.M.

2 AUCTION RINGS – RING 1: Fence Line: Lumber & Construction Supplies, (Over 400) Lots of New & Unused Lumber, Fencing, Building Materials, New & Unused Equipment, Large Qty. of New & Unused Pallet Racking & Warehouse Supplies ★ **RING 2:** Asset Seizures, Real Estate, (350+) Gov't Fleet Vehicles, Light Trucks, Boats & Motorcycles ★



FIRST CAPITOL AUCTION INC.

LIQUIDATORS & APPRAISERS

50 Solano Avenue, Vallejo, California 94590

Phone (707) 552-0739 • Fax (707) 552-8613

www.1stcapitolauction.com • e-mail: auctioncap@aol.com

Inspection & Registration:

Thursday, April 20

from 9:00 A.M. – 4:30 P.M.

LIVE INTERNET
BIDDING Available Through
proxibid.com.™

DAY 1: FRIDAY, APRIL 21, 2017 AT 9:00 A.M.

CONSTRUCTION & RENTAL EQUIPMENT ★ LARGE TRUCKS & TRAILERS



AIR COMPRESSORS AND GENERATORS



LANDSCAPING EQUIPMENT



KUBOTA AND POLARIS RTVS



CATERPILLAR 416D BACKHOE LOADER

BACKHOE LOADERS

CASE 580 Super M 4x4 Backhoe Loader, 4-in-1 bucket, extend-a-hoe, 18" bucket, s/n JIG0279096.

CASE 580 SK 4x4 Backhoe Loader, 4-in-1 bucket, extend-a-hoe, aux. hyd., canopy, s/n JIG0718680.

JOHN DEERE 510C Backhoe Loader, 4-in-1 bucket, extend-a-hoe, s/n TO310CB774406.

JOHN DEERE 410C Backhoe Loader, 4-in-1 bucket, extend-a-hoe, s/n T0410CA732253.

CATERPILLAR 426C 4x4 Backhoe Loader, 4-in-1 bucket, extend-a-hoe, s/n 6XNO4814.

CATERPILLAR 416D Backhoe Loader, 4-in-1 bucket, extend-a-hoe, enclosed cab, only 3,600 hours, s/n CAT0416DEBFP05220.

MINI EXCAVATORS

2010 JOHN DEERE 35D Hyd. Excavator, John Deere diesel eng., aux. hyd., quick release, rubber tracks, cab, heat/AC, 2,310 hours, s/n 1FF035DXEBG267586.

CATERPILLAR 3045 Hyd. Excavator, Perkins diesel eng., aux. hyd., quick release, backfill blade, rubber tracks, cab, heat, s/n CAT03045CWAK00226.

CATERPILLAR 303CR Hyd. Excavator, Mitsubishi diesel eng., aux. hyd., backfill blade, rubber tracks, canopy, s/n CAT00303JDMA00725.

2013 TEREX TC 37 Hyd. Excavator, diesel eng., aux. hyd., backfill blade, rubber tracks, 24" bucket, quick release, s/n TC00370970.

Miscellaneous Buckets.

2013 STANLEY MB138 Excavator Breaker Attachment, 1,801-2,500-lbs.

SKID STEER LOADERS & UTILITY TRACTORS

2016 BOBCAT S-530 Skid Steer Loader, Bobcat diesel eng., GP bucket, high-flow, aux. hyd., solid rubber tires, canopy, low hours, (has been rolled), s/n ALR814851.

KUBOTA B7300 4x4 Utility Tractor, Kubota diesel eng., 3-pt. hitch, PTO, GP bucket, roll bar.

FORD 260 C Utility 4x4 Tractor, 4-in-1 bucket, 3-pt. hitch, PTO, aux. hyd., 16.9x24 rear tires, 12x16.5 front tires, canopy.

MASSEY FERGUSON 20 Utility Tractor, 3-pt. hitch, PTO, 18.4x16.1 rear tires, 7.5x10 front tires.

LOWE XR-14 Trencher Attachment.

2017 Skid Steer Hydraulic Trencher.

PAVING & COMPACTION EQUIPMENT

(3) INGERSOLL RAND DD-24 Double-Drum Roller, Kubota diesel eng., 48" drums, vibratory, sprayers, canopy, hours 1,608 and 1,382, s/n 170107, 18792, 689251D.

(5) WACKER RD II A Double-Drum Rollers, gas eng., 36" drums, vibratory, roll bar, sprayers.

(5) 2000 WACKER/NEUSON RD11A Double-Drum Rollers, diesel eng., 36" drums.

2012 MULTIQUIP RW1515 Trench Compactor, diesel, 33" drums, vibratory, s/n 50471.

LEE BOY Trailer-Mounted Sealer, Honda gas eng., LP burner, pintle hitch.

(2) 2009 MULTIQUIP 7060 Walk-Behind Concrete Saw, Duetz diesel eng., 36" max. blade, 15" max. cut depth.

WACKER DPU130 Reversible Plate Compactor.

FORKLIFTS & REACH EQUIPMENT

CLARK C500YS-200 Forklift, diesel eng., 18,400-lb. cap., 2-stage mast, 144" fork height, cab, heat, 8,597 hours.

CATERPILLAR V80E Warehouse Forklift, LP eng., 7,050-lb. cap., 3-stage mast, 170" fork height, canopy, 8,189 hours.

NISSAN 5000 Warehouse Forklift, Nissan diesel eng., 5,000-lb. cap., 2-stage mast, 145" fork height, canopy, 1,622 hours.

ALLIS CHALMERS F-50 Warehouse Forklift, LP eng., 4,000-lb. cap., 3-stage mast, 151" fork height, canopy, 1,672 hours, s/n 37200000.

ALLIS CHALMERS FP-40 Warehouse Forklift, gas eng., 4,000-lb. cap., 2-stage mast, 130" fork height, canopy, 2,180 hours.

KALMAR ACC 50 Warehouse Forklift, LP eng., 3,500-lb. cap., 3-stage mast, 192" fork height, canopy.

JLG 600AJ 60' Articulating Boom Lift, dual fuel.

(2) GENIE Z-30/20N Boom Lifts, electric, articulated 30' jib narrow, s/n Z30N0710315.

2007 SKYJACK 3219 Scissor Lift, electric, 19' narrow, s/n 22002316.

GENIE GS 2632 Scissor Lift, electric, 26' platform height, 589 hours, s/n GS3207-87236.

2011 JLG 1230ES Mast Lift, 12', drivable, battery, s/n 0200201382.

BRODERSON Road Runner RTR 80 4x4 Carry Deck Crane, John Deere diesel eng., 17,500-lb. cap., 38', 3-stage boom, 4-wheel steer, cab, 3,947 hours.

GENERATORS, AIR COMPRESSOR, STEAM CLEANERS & LIGHT TOWERS

2006 AIRMAN Power Pro MMD 150S Towable Generator, Volvo diesel eng., 3-phase, 150 kVA, 480 v, 60 Hz, 87 kW, pintle hitch, s/n 6-144.

SULLAIR 75 Towable Generator, Perkins diesel eng.

SULLAIR 375 DPQ Towable Air Compressor, Caterpillar diesel eng., 375 CFM, pintle hitch, 1,338 hours.

(2) SHARK SSD-6035 Towable Steam Cleaners, Kohler diesel eng., fresh water tank, diesel burner, pintle hitch, 654 hours.

(2) EASY KLEEN Magnum 400 Steam Cleaner, gas eng., diesel burner, hose wand, tips.

(2) 2014 TERREX Towable Light Towers, Kubota diesel eng., (4) LED lights, ball hitch, **192 and 167 hours.**

GENIE TML 4000 N Towable Light Tower, Lombardini diesel eng., (4) lights, ball hitch.

TRENCHER & MOWERS

DITCH WITCH 3500 DD 4x4 Ride-On Trencher, Duetz diesel eng., backfill blade, roll bar.

(2) JOHN DEERE F687 Z Trak Ride-On Mowers, gas eng., 48" mower deck, 1,609 and 1,664 hours.

HONDA HRC 7013 48" Mower.

BOMFORD Falcon 5.5 Pro Cut 3-Pt. Side Boom Mower Attachment.

(2) 2017 70" 3-Pt. Heavy-Duty Flail Mower.

DUMP TRUCKS & TRUCK TRACTORS

2002 STERLING 3-Axle Dump Truck, diesel eng., Allison A/T, Heil dump bed.

2001 FREIGHTLINER FC-70 Front Loader Dump Truck, Cummins diesel eng., Allison auto. trans., PB loader, front loader, Heil dump bed, 104,401 miles, non-compliant.

1996 FREIGHTLINER FLD 112SD Dump Truck, Caterpillar diesel eng., manual trans., Munice PTO, non-compliant.

1995 FREIGHTLINER FL 109 3-Axle Dump Truck, diesel eng., auto. trans., Heil dump body, non-compliant.

2002 FORD F-350 XL Super Duty Stake Side Dump Bed Truck, gas eng., auto. trans., stake side dump bed body.

1997 FORD F-Super Duty Dump Truck, gas eng., auto. trans., Heil dump bed, 124,608 miles, non-compliant.

2000 FREIGHTLINER FL112 3-Axle Truck Tractor, headache rack, wet kit.

1994 FORD 19000 3-Axle Truck Tractor, headache rack, wet kit.

1997 FORD LT 900 Dump Truck w/Transfer Bed, Cummins diesel eng., Road Ranger, manual trans., Reliance transfer dump bed body, 18,925 miles, non-compliant.

1996 FORD F-Series Dump Truck, Ford diesel eng., auto. trans., Chelsea PTO, Heil dump bed, 93,371 miles.

1994 FORD F-900 Dump Truck, Cummins diesel eng., auto. trans., Munice PTO, Crysteel dump bed, 27,271 miles, non-compliant.

2001 FORD F-450 Dump Truck.

1995 FORD F-T900 Dump Truck.

INTERNATIONAL S1700 Dump Truck, International gas eng., auto. trans., Universal Truck Equip., Inc. dump bed, 59,476 miles.

MUNICIPAL TRUCKS & FIRE ENGINES

2005 STERLING Condor Roll-Off Truck, diesel eng., only 69,000 miles.

2004 FREIGHTLINER FLD112SD Vector Truck, diesel eng., Allison auto. trans., hoses and reels, Clean Earth Safe Jet vac, vactor body, blower, H2O pump, (CA Retrofit).

(2) 1997-1995 SPARTAN Hi-Tech Pumper Fire Trucks, Detroit 60 Series diesel eng., Allison A/T, Hale pump.

1996 HHE Fire Truck, diesel eng., A/T, 3-D pumper.

1988 SIMON Ladder Truck, Detroit diesel eng., Allison A/T, Aerial ladder, water cannon, generator.



(3 OF 4) SCHWARZ SWEEPER TRUCKS



(3 OF 5) PUMPER AND LADDER FIRE ENGINES



(6 OF 12) ASSORTED STEP VANS



FREIGHTLINER FL112 3-AXLE TRUCK TRACTOR

3 WAYS TO BUY AT A FIRST CAPITOL AUCTION

★ Live Onsite ★ Absentee Bid ★ Simulcast on the Internet @ www.proxibid.com ★

DAY 1: CONTINUED

1992 FORD F-700 Pumper/Utility Truck, Ford diesel eng., auto. trans., RSQ specialty vehicles utility/pumper body w/Hale pump, 26,670 miles.

1988 DUPLEX 5046-88 Tiller Ladder Truck w/Water Cannon, Detroit diesel eng., Allison auto. trans., Akron Gemini water cannon, reels w/power cables and generator, 110' aerial ladder, 138,370 miles.

SWEEPER & BUCKET TRUCKS

(3) **2006 STERLING SC8000/A9000 Sweeper Trucks**, CNG and Cummins diesel eng., Felsted auto. trans., Schwarze A9000 sweeper body, 34,829 and 57,015 miles, non-compliant.

2005 SCHWARZ A8000 Sweeper Truck, Cummins diesel eng., Allison A/T, John Deere aux. eng., ARB compliant.

1997 FORD Cargo Tymco Sweeper Truck, diesel eng., Felsted auto. trans., Tymco sweeper body, 119,228 miles, non-compliant.

2005 FORD F-550 XL Super Duty Bucket Truck, International diesel eng., aux. hyd., auto. trans., Muncie PTO, Altec utility/bucket body, 165,189 miles.

STEP VANS, FLATBEDS & UTILITY TRUCKS

(6) **2001 FREIGHTLINER-GRUMMAN Olson Step Vans**, Cummins diesel eng., A/T, 2-ton cap., 67,000-127,000 miles.

(10) **1996 GMC Utilimaster Step Vans**, GM diesel eng., A/T, (3) 2-ton and (7) 1-ton, some w/lift gate.

1998 CHEVROLET Utilimaster Step Van, gas eng., auto. trans., 61,857 miles.

1995 CHEVROLET Utilimaster Step Van, gas eng., auto. trans., Onan 4000 genset, 20-gallon air compressor, Gen-X2200T inverter, 60,602 miles.

1998 DODGE Ram 3500 4x4 Flatbed Truck w/Arc Welder, gas eng., auto. trans., Lincoln classic arc welder, reels w/wire, 182,868 miles.

1999 DODGE Ram 3500 Stake Side Flatbed Truck, gas eng., auto. trans., Tommy Gate Co. lift gate, Dailey stake side flatbed, 108,928 miles.

1998 DODGE Ram 3500 4x4 Flatbed Truck w/Arc Welder, gas eng., auto. trans., Lincoln classic arc welder, reels w/wire, 182,868 miles.

2001 DODGE Ram 3500 Utility w/Winch and Crane, gas eng., auto. trans., Warn winch, auto. crane, Diamond utility body, 98,289 miles.

1996 CHEVROLET Cheyenne 3500 Utility Truck; **2001 GMC 3500 Flatbed Truck**; **2008 FORD F-250 Super Duty Cab and Chassis**; **FORD F-350 Utility Bed**; **2008 FORD F-250 Pickup, w/dump bed**; (2) **2008-2003 FORD F-250 Utility Pickup**; **1997 FORD F-250 Heavy-Duty Pickup, w/utility bed**; **2008 FORD F-250 Pickup, w/dump bed**; **GMC Utilimaster Step Van**; **2001 DODGE 1-Ton Flatbed Dump**; **1990 GMC 1-Ton Flatbed Dump**.

TRAILERS & CONTAINERS

2000 RELIANCE 42' Tilt-Deck Container Trailer, Brandon 36,000-lb. hyd. winch; **1989 WRIGHT 2-Axle Equipment Trailer**, electric landing gear, fold down ramps; **2009 MARKSMAN 6 x 10 Dump Trailers**, 10,000-lbs.; (4) **2011 MARKSMAN Tilt Trailers**, 10,000-lbs.; (2) **2-Axle Flatbed Utility Trailers**; **Single-Axle Flatbed Utility Trailer**; (6) **Single- and 2-Axle Utility Trailers**; **SELMA Single-Axle Hyd. Drop Utility Trailer**; (2) **2005 DECATUR RT-50 Radar Trailers**; (2) **40' Dry Van Trailers**; (2) **20' Insulated Containers**, (1) w/kitchen; (2) **26' Containers**.

More Trailers and Containers Arriving After Publication. Check Website for Additions.

DAY 2: SATURDAY, APRIL 22, 2017

RING 1: FENCE LINE - STARTS AT 9:00 A.M. ONLINE BIDDING AVAILABLE

(Over 350) Lots of Hand & Power Tools, (Over 40) Lots of New & Unused Lumber, Fencing & Building Materials & Misc. Equip. Some items listed below will be sold in Day 1

NEW & UNUSED WAREHOUSE RACKING & SUPPLIES

Large Quantity and Various Sizes of New and Unused Steel King 4,000-Lb. Cap. Portable Pallet Racking; Metal 2 Standard Base Sizes; (4) Post Sizes and Wood Deck Option; 4-Way Short Fork Base Design.

(2) **HIGHLIGHT Synergy .5 Stretch Wrap Machines**; (2) **HIGHLIGHT Synergy Ramps**; (5) **DURHAM Flush-Door Steel Rolling Cabinets, DD**; (5) **SANDUSKY Mobile Storage Cabinet Carts, TA113**; (11) **JAMCO 3-Shelf Picking Carts**; (37) **ATLANTIC, 200-lb. cap. shelves, locking door**; (20) **DAYTON 800-Lb. Cap. Hand Trucks**; (3) **DAYTON 2FTL1 Work Height Wood Platform ST Carts**; (32) **MECO Oxygen Cylinder Racks, 8-Cyl. CP9**; (203) **MADA Oxygen Cylinder Holders, 2046**; (250) **AKRO-MILS 18" Open Bins, red**; (476) **AKRO-MILS 17"x8.5-Gallon Attached Lid Bins**; **STEEL KING Stacking Bases and Posts**; (2) **ASHLAND Roller Conveyor 90 Curves**; (10) **ASHLAND Roller Conveyors**; (6) **RUBBERMAID 9T15 Tilt Trucks**; (26) **RUBBERMAID Slim Jim Recycle Bins**; (144) **RUBBERMAID Brute Containers**; (14) **BRUTE Trainable Dollies**; (4) **BRUTE Dolly Rollers**; **COTTERMAN Knockdown Ladder**.

NEW & UNUSED EQUIPMENT & MISC.

JET 10" Table Saw, (2) **HYDROPERFECT Hyd. Supply Units**; (2) **ALM 9001 2-Post Car Lifts**; (4) **JBX 4000 48" Skid steer Fork Attachments**; (4) **Mustang LF 88 Plate Compactors**; **MUSTANG ML 80s Rammer**; **MUSTANG 6500 DP Silent Diesel Generator**; **MUSTANG MAC 6538 Twin-Tank Air Compressor**, (4) **MUSTANG 4800 2" Submersible Pumps**, **Mustang MP3 3" Water pump**, (2) **MUSTANG CV 3500 Concrete Vibrators**, (5) **3-Pc. 14" Premium Diamond Blades**, (4) **12-ply 12x16.5 skid steer tires (sell as 1 lot)**; (4) **25' 800 amp Extra Heavy-Duty Booster Cables**; (4) **Auto. Darkening Welding Helmets**; (2) **HUSKIE B65 Electric Demolition Hammers**; (2) **4-Pack 10,000-Lb. Ratchet Cargo Straps**; (4) **1/2" Drive Air Impact Wrench Kits**; **250 amp Electric Arc Welder**; (4) **2" x 50' Discharge Water Hoses**; (2) **HUSKIE 11218 SDS Hammer Drills**; (2) **3-Pc. Air Spray Gun Kits**; **80" Heavy-Duty Drawer Tool Cabinet**; (2) **10' 20-Drawer Heavy-Duty Metal Work Benches**; **30' x 65' x 15' Peak Ceiling Double Storage Building**; **20' x 30' x 12' Peak Ceiling Shelter**; (2) **10-Ton Hydraulic Porta Power Kits**; (2) **50-Ton Bottle Jacks**; **48" Farm Jacks**; **12-Ton Pipe Bender**; **3-Ton Chain Hoist**; (3) **PTO Heavy-Duty Backhoe Attachments**.



(OVER 40) LOTS OF NEW AND UNUSED LUMBER AND BUILDING SUPPLIES



LARGE QTY. OF NEW AND UNUSED PALLET RACKING AND WAREHOUSE EQUIP.

MISCELLANEOUS

(2) **3,000-Gallon Fuel Tanks**; (11) **HONDA EW 171 Welder/Generators**; (3) **HONDA EB 6500 Generators**; **HONDA EB 5000 Generator**; **HONDA EB 4000 Generator**; **HONDA EB 3500 X Generator**; **HOMELITE Voltmatic Generator**; **GMI Gen Pro 2 Generator**; **LINCOLN Weldonpower Portable Welder**, **WACKER P63A Dewatering Pump**; **PROVOST 60" Snow Blower**; **CUB 200 Arctic Bear Heater**; Row of Assorted Bikes.

DAY 2 - RING 2: SATURDAY, APRIL 22, 2017 AT 10:00 A.M.

★ RING 2: Asset Seizures, Real Estate, (350+) Gov't Fleet Vehicles, Light Trucks, Boats, Motorcycles & More! ★



(1 OF 4) HARLEY DAVIDSON POLICE MOTORCYCLES



ASSET SEIZURES



LATE-MODEL PICKUP TRUCKS



GOVERNMENT FLEET VEHICLES

MOTORCYCLES, UTILITY CARS & BOAT

(3) **2009-2007 HARLEY DAVIDSON Road King Motorcycles**, gas eng., manual trans.

2009 HONDA ST1300 PA Motorcycle, gas eng., manual trans., 115,824 miles.

2008 BMW R1200 RT Motorcycle, gas eng., manual trans., 91,912 miles.

2001 KAWASAKI KL650A Enduro Motorcycle, gas eng., manual trans., 5,819 miles.

2005 HONDA Rancher AT TRX400FA 4X4 ATV, gas eng., auto. trans., 3,409 miles.

(2) **1995-1994 SUZUKI DR350S Enduro Motorcycles**, gas eng., manual trans., 5,813 miles, non-runner.

1982 SUZUKI GS1100GKZ Motorcycle, gas eng., manual trans., 15,777 miles, non-runner.

(3) **2007 GO-4 Interceptor 3-Wheel Carts**, gas eng., auto. trans., 32,812, 49,132, 53,693 miles.

2010 COLUMBIA ParCar SMZ-TN Electric Cart, electric eng., auto. trans., no keys, non-runner.

2005 GEM ES Electric Cart, electric eng., auto. trans., no keys, non-runner.

2011 KUBOTA RTV 1140 4x4 Utility Cart, Kubota diesel eng., 4 passenger, hyd. dump bed, canopy, 1,713 hours, s/n 019209.

YAMAHA Utility Cart.

KAWASAKI Mule 2510 4X4.

KLAMATH 14' Aluminum Boat and Trailer, Mercury 15 hp outboard motor, Blako trailer. **Pontoon Boat Trailer**.

PLEASE CHECK OUR WEBSITE DAILY! FOR COMPLETE LISTINGS THAT INCLUDE COLOR PICTURES, IN-DEPTH DESCRIPTIONS, AND MILEAGE. NEW LISTS COMING IN DAILY! CHECK OUR WEBSITE: WWW.ISTCAPITOLAUCTION.COM • GO TO OUR SITE AT WWW.PROXIBID.COM

TERMS & CONDITIONS:

Complete terms and conditions available day of sale, or visit www.istcapitolauction.com

SEALED BID

(6) **2002 ORION VII Transit Buses**, not on location - call for additional information.



SEALED BID

(6) **Modular Office Buildings**.





FIRST CAPITOL AUCTION INC.

COMMERCIAL LIQUIDATORS & APPRAISERS

50 Solano Ave., Vallejo, CA 94590

For more information call (707) 552-0739

Visit our Website at www.1stcapitolauction.com

or e-mail us at: auctioncap@aol.com

Liquidators & Appraisers

CSL #A1621

2-DAY ★ NO MINIMUM ★ NO RESERVE

PUBLIC AUCTION

Over 45 Bay Area Contractors ★ Herc Rents
Gov't Agencies & Municipalities

DAY 1: FRIDAY, APRIL 21 AT 9:00 A.M.

★ RING 1: Late-Model Construction, Rental Equipment,
Large Trucks, Trailers & More ★

DAY 2: SATURDAY, APRIL 22 AT 9:00 A.M.

★ RING 1: Fence Line: Lumber & Const. Supplies, (Over 400) Lots of
New & Unused Lumber, Fencing, Building Materials, New & Unused
Equip., Large Qty. of New & Unused Pallet Racking & Warehouse
Supplies ★ RING 2: Asset Seizures, Real Estate, (350+) Gov't Fleet
Vehicles, Light Trucks, Boats & Motorcycles ★

50 SOLANO AVENUE, VALLEJO, CALIFORNIA 94590

AUCTION HELD RAIN OR SHINE!

QS-0036945



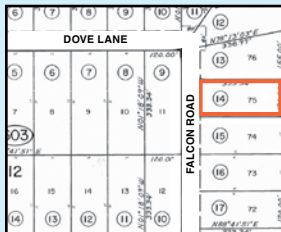
Presorted
First Class Mail
U.S. Postage
PAID
Eugene, Oregon
Permit No. 17



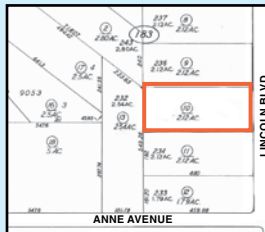
REAL ESTATE PROPERTY AUCTION

Real Estate Lots to Be Sold at the First Capitol Auction Facility Before the
Fleet Vehicles (Approximately 11:00 A.M.)

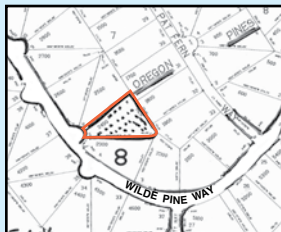
Inspection Available the Week of April 17-21, 2017 Only!



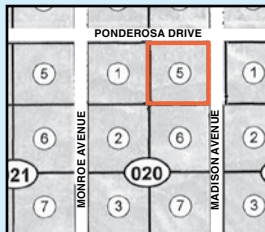
PROPERTY 1
1 Acre Lot on Falcon Road,
California Pines
Lot 75, Block 13, Unit 5
APN #041-602-1411
San Bernardino,
Modoc County, California
All Taxes Paid



PROPERTY 2
2+ Acre Lot
on Lincoln Blvd.
Track 2828 235
APN #202-183-10-00-5
Kern County, California
All Taxes Paid

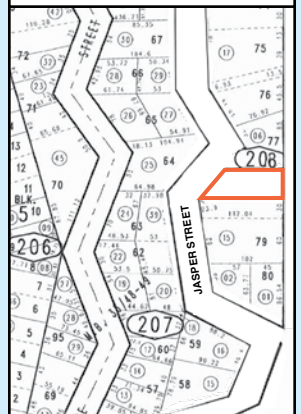


PROPERTY 4
1-1/2 Acres on Wilde Pine
Way, Oregon Pines
Lot 5, Block 7
APN #3511-061A0-02400-000
Klamath County, Oregon
All Taxes Paid



PROPERTY 5
2 Acres
on Madison Avenue,
Twin River Ranchos
Unit 3, Lot 5, Block 20
APN #025-020-005
Elko County, Nevada
All Taxes Paid

PROPERTY 3
Lot on Jasper Street,
Near Lake Arrowhead
Track 2469,
Lakebrook Park, Lot 78
APN #0330-208-05-0000
San Bernardino, California
All Taxes Paid



FIRST CAPITOL AUCTION INC.

LIQUIDATORS & APPRAISERS ★ (707) 552-0739 ★ Vallejo, CA