

# 2-DAY PUBLIC AUCTION

**FIRST CAPITOL AUCTION INC.**

*Northern California's Leading Auction Company*

**MULTI MILLION DOLLAR ★ NO MINIMUM ★ NO RESERVE**

**FRIDAY & SATURDAY, AUGUST 25 & 26 AT 9:00 A.M.**  
 50 Solano Avenue, Vallejo, California, San Francisco Bay Area

**Bay Area Contractors ★ Herc Rentals ★ Over 35 Gov't Agencies & Municipalities**

## DAY 1: FRIDAY, AUGUST 25 AT 9:00 A.M.

★ Late-Model Construction, Rental Equipment, Large Trucks, Trailers & More ★



CATERPILLAR 938G RT LOADER

LOW HOURS



< (1 OF 2) 2013-2012 CATERPILLAR 303.5ECR MINI EXCAVATORS



2012 FORD F-750 18-TON CRANE TRUCK

ONLY 1,975 HRS.



BOBCAT T190 TRAC SKID LOADER (ENCLOSED CAB)



2012 JOHN DEERE 135D HYDRAULIC EXCAVATOR



2006 JLG E450AJ BOOM LIFT

1 OF 16



2011 JOHN DEERE 310J 4X4 BACKHOE LOADER

ONLY 1,950 HRS.

> 2012 KOBELCO SK20SR-5 MINI EXCAVATOR



2009 PETERBILT 386 TRUCK TRACTORS

1 OF 2

## DAY 2: SATURDAY, AUGUST 26 AT 9:00 A.M.

**3 AUCTION RINGS – RING 1:** Fence Line, (Over 500) Lots of New & Unused Lumber, Hardwood Flooring, Fencing & Building Materials, New & Unused Equipment, Hand & Power Tools, New Outdoor & Seasonal Items, Complete Liquidation of Electrical Contractor, Many Items to Be Sold in Bulk ★ **RING 2:** Asset Seizures, Real Estate, (350+) Gov't Fleet Vehicles, Light Trucks, Boats, Buses & Motorcycles ★ **ONLINE ONLY SALE** – Bidding Starts August 6 and Ends August 29



**FIRST CAPITOL AUCTION INC.**  
 LIQUIDATORS & APPRAISERS  
 50 Solano Avenue, Vallejo, California 94590  
 Phone (707) 552-0739 • Fax (707) 552-8613  
 www.1stcapitolauction.com • e-mail: auctioncap@aol.com

**LIVE INTERNET BIDDING** Available Through [proxibid.com](http://proxibid.com)™

**INSPECTION:**  
 Thursday, August 24  
 from 9:00 A.M. – 4:30 P.M.

# DAY 1: FRIDAY, AUGUST 25, 2017 AT 9:00 A.M.

## CONSTRUCTION & RENTAL EQUIPMENT ★ LARGE TRUCKS & TRAILERS



2005 CASE 580M 4X4 BACKHOE LOADER



JOHN DEERE 6410 4X4 UTILITY TRACTOR



2012 BOBCAT S130 SKID STEER LOADER



2003 GENERAC 2000 TOWABLE GENERATOR



CATERPILLAR 426C 4X4 BACKHOE LOADER

### EXCAVATORS & RT LOADERS

2012 JOHN DEERE 135D Hydraulic Excavator, backfill blade, aux. hyd., 36" bucket, cab, heat/AC, 2,535 hours.

2011 JOHN DEERE 50D Mini-Excavator, OROPS, steer tracks, blade, 2-speed travel, 1,705 hours, s/n 1FF050DXJBG276230.

(3) 2013-2012 CATERPILLAR 303.5 ECR Mini Excavators, OROPS, rubber tracks, blade, thumb, 2-speed, from 1,420 hours! s/n CAT3035ECRK400627, EVRKY01553, KY01253.

2011 KOMATSU PC78US-8 Mini Excavator, EROPS, steel tracks w/rubber pads, 2-speed, 4,477 hours, s/n KMTCP213C01016858.

(2) 2013-2008 KOMATSU PC30MR-3 Mini Excavators, OROPS, steel tracks/rubber pads, aux., blade, 3,323 hours, s/n KMTPC200L04035914, 200H05031325.

2012 KOBELCO SK20SR-5 Mini Excavator, EROPS, rubber tracks, blade, 998 hours, s/n PMID-11182.

CATERPILLAR 938G RT Loader, GP bucket, aux. hyd., 525x80 R25 rubber, cab, heat/AC, 3,794 hrs, s/n CAT0938GACRD01577, non-compliant.

CATERPILLAR 930 RT Loader, GP bucket, cab, heat, 17.5-25 rubber, 1,691 hours, s/n 41K12408.

JOHN DEERE 244E RT Loader, GP bucket, cab, heat, 6,880 hours, s/n T6244ED000194.

### BACKHOE LOADERS

2011 JOHN DEERE 310J 4x4 Backhoe Loader, 4-in-1 loader bucket, extend-a-hoe, quick release backhoe bucket, 1,816 hours, s/n 1T0310JXPB0201726.

2005 CASE 580M 4x4 Backhoe Loader, 4-in-1 loader bucket, extend-a-hoe, Tag quick release 24" backhoe bucket, canopy, 3,016 hours, s/n N4C382085.

CATERPILLAR 426C 4x4 Turbo Backhoe Loader, 4-in-1 loader bucket, extend-a-hoe, aux. hyd., 36" quick release backhoe bucket, cab, heat/AC, 4,253 hours, s/n 6XN01737, non-compliant.

FORD 555B Backhoe Loader, 4-in-1 loader bucket, 12" backhoe bucket, canopy, 5,894 hours, s/n C7522278, non-compliant.

TERRAMITE T5C Backhoe Loader, gas engine., GP bucket, canopy, quick release backhoe bucket, 1,592 hours, s/n 2750117.

### SKID STEER LOADERS & UTILITY TRACTORS

2012 BOBCAT S130 Skid Steer Loader, Kubota diesel engine, GP bucket, aux. hyd., 1,210 hours, s/n AU4Y11859.

2002 BOBCAT T190 Trac Skid Loader, Kubota diesel engine, 4-in-1 bucket, Hi Flow aux. hyd., cab, heat/AC, rubber tracks, 1,845 hours, s/n 519312856.

BOBCAT 743B Skid Steer Loader, Kubota diesel engine, GP bucket, aux. hyd., canopy, 3,934 hours, s/n 509315267, non-compliant.

2003 BOBCAT 863 Skid Steer Loader, Duetz diesel engine, GP bucket, Hi Flow aux. hyd., canopy, 4,417 hours, s/n 514451131.

2013 TEREX TSR50 Trac Skid Loader, OROPS, rubber tracks, pilot controls, 2-speed, smooth bucket, s/n ASVR050L3WS00379.

2012 TEREX TSV50 Skid Steer Loader, OROPS, pneumatic tires, pilot controls, smooth bucket, s/n ASVSV050KDW500176.

MUSTANG MTL-20 Trac Skid Loader, Isuzu diesel engine, GP bucket, rubber tracks.

MUSTANG MTL-16 Trac Skid Loader, Isuzu diesel engine, GP bucket, rubber tracks.

MASSEY FERGUSON MF50E Skip Loader, 4-in-1 bucket, Gannon box, s/n Y0290.

MASSEY FERGUSON MF40E Skip Loader, 4-in-1 bucket, Gannon box, s/n 5218B0160.

2001 JOHN DEERE 6410 4x4 Utility Tractor, GP bucket, Gannon scraper box, PTO, aux. hyd., 3-pt. hitch, cab, heat/AC, 1,270 hours, s/n L06410X306059, non-compliant.

JOHN DEERE 6310 Utility Tractor, 3-pt. hitch, PTO, aux. hyd., Tiger side boom, Flail mower attachment, cab, heat/AC, 2,833 hours, s/n L063105305278, non-compliant.

2011 JOHN DEERE 3320 Utility Tractor, diesel engine, 869 hours, s/n 1LV3320HCBH710683.

MASSEY 390 Utility Tractor, s/n 5009R16035.

TORO Dingo w/Loader Bucket.

### COMPACTION & PAVING EQUIPMENT

DYNAPAC CC102 Double-Drum Roller, spray system, dual drive, s/n 60112813.

WACKER Double-Drum Roller, s/n 073604374.

LAYMOR 6HC Ride-On Sweeper, s/n 30517.

ALL AMERICAN Trailer-Mounted Sprayer, Lombardini diesel engine.

### FORKLIFTS

2006 JLG G6-42A Telehandler, John Deere diesel engine, 6,000-lb. cap., 44' 3-stage boom, hydraulic leveling, 3,089 hours, s/n 0160021380.

(2) GRADALL 534-C9 Telehandlers, Cummins diesel engine, 9,000-lb. cap., 40' 3-stage boom, rotating carriage, aux. hyd., foam filled tires, s/n 0344780, 0544753.

KOEHRING High Trak 5522 Telehandler, Cummins diesel engine, 25' 3-stage boom.

CLARK C-300-Y1802 RT Forklift, gas engine, 13,050-lb. cap., 2-stage mast, fork positioners, pneumatic tires, canopy, s/n Y1625-29-4351.

CLARK TMG20 Warehouse Forklift, electric, 3,500-lb. cap., 183" fork height, canopy, s/n TMG-248-2024-9570-KF.

BRODERSON IC-80-IE Carry Deck Crane, diesel engine, 17,000-lb. cap., 3-stage boom, 28' height, 20' reach, non-insulated boom, 14,000-lb. cap. on deck, winch, s/n 269984.

2006 RAYMOND EASI OPC30TT Order Picker, rail guided, 3,000-lb. cap., 204" platform height, 24 v battery.

### BOOM LIFTS & SCISSOR LIFTS

(6) 2008-2006 GENIE Z-45/25J Articulated Boom Lifts, electric, 45' jib, 913-1,403 hours, s/n Z452507322, 7334, 630123, 630130, 733389, 8A35562.

2006 JLG E450AJ Articulated Boom Lift, electric, 45' jib, 1,103 hours, s/n 300093851.

2007 JLG E400AJP Articulated Boom Lift, diesel, 40' wide, rotating jib, 1,253 hours, s/n 0300112238.



DYNAPAC CC102 TANDEM ROLLER



2011 DITCH WITCH RT45 RIDE-ON TRENCHER



2000 RELIANCE CONTAINER TRAILER

## 3 WAYS TO BUY AT A FIRST CAPITOL AUCTION

★ Live Onsite ★ Absentee Bid ★ Simulcast on the Internet @ [www.proxibid.com](http://www.proxibid.com) ★



**DAY 1: FRIDAY, AUGUST 25 CONTINUED**



**2004 PETERBILT 3-AXLE  
TRUCK TRACTOR**



**(2 OF 6) ASSORTED FIRE ENGINES**



**2004 INTERNATIONAL 7600  
VACTOR TRUCK**



**ASSORTED DUMP TRUCKS**

**SPECIALTY & FLATBED TRUCKS**

**2012 FORD F-750 18-Ton Crane Truck**, Cummins diesel engine, Fuller trans., National 571E2 crane, 18-ton cap., front out riggers, 18,000 miles, carb-compliant.

**2004 INTERNATIONAL 7600 Vactor Truck**, diesel engine, auto. trans., hoses and reels, Vac-Con vactor bed, CA Retrofit.

**1997 FORD LN8000 Vactor Truck**, diesel engine, auto. trans., CA Retrofit.

**(13) 1997 GMC Utilmaster Dually Step Vans**, diesel engine, auto. trans., w/Thieman Liftgate, non-compliant.

**2001 Dodge Ram 3500 Flatbed Truck**, gas engine, auto. trans., w/Tommy Gate liftgate, Knapheide flatbed; **2000 FORD F-450 Super-Duty Flatbed Truck**, diesel engine, auto. trans.; **CHEVROLET 3500 Dually Flatbed Truck**, gas engine, auto. trans., Eagle liftgate; **CHEVROLET 6400 Flatbed Truck**, gas engine, manual trans.

**UTILITY TRUCKS**

**2007 FORD F-350 Super Duty Utility Truck w/Crane**, gas engine, auto. trans., Auto Crane 3203, Scelzi body; **1991 CHEVROLET 3500 4x4 Utility Truck w/Auto Crane**, diesel engine, auto. trans., PTO, Warn MX 8600 winch, Auto Crane 5000H, 5,000-lb. cap.; **1991 CHEVROLET 3500 4x4 Utility Truck w/Auto Crane**, diesel engine, auto. trans., PTO, Warn MX 8600 winch, Auto Crane 5000H, 5,000-lb. cap.; **1991 CHEVROLET 3500 4x4 Utility Truck w/Crane**, diesel engine, auto. trans., PTO, Lincoln AC/DC welder, Warn M8000 winch, ATO crane 5005H, 5,000-lb. cap.; **2004 FORD F-250 4x4 Utility Truck**; **1999 FORD F-550 Service and Utility Truck**; **2000 FORD F-350 4x4 Utility Truck**; **2000 CHEVROLET C3500 DRW Utility Truck**; **2008 FORD F-550 DRW Utility Truck**; **2003 FORD F-350 Utility Truck**; **1997 CHEVROLET 3500 Utility Truck**; **2000 FORD F-350 Utility Truck**; **1999 FORD F-550 Utility Truck**; **2004 FORD F-250 XL 4x4 Utility Truck**.

**TRAILERS & CONTAINERS**

**ZIEMAN 2-Axle Equipment Tilt Deck Trailer**; **2-Axle Equipment Trailer w/Folding Ramps**; **Single-Axle Equipment Trailer w/Fold Down Ramp**; **Single-Axle Equipment Tilt Deck Trailer**; **2011 MARKSMAN TBET80X1 Tilt Trailer**; **2000 RELIANCE Container Trailer**; **ZIEMAN 1150 Equipment Trailer**; **CHAMPION Trailer**.



**CATERPILLAR 930 RT LOADER**



**FORD F-800 HEAVY RESCUE TRUCK**



**CLARK C-300 RT FORKLIFT**



**BANDIT DIESEL BRUSH CHIPPERS**

>  
**NEW AND  
UNUSED  
ATTACHMENTS,  
TENTS AND  
MISC.  
EQUIPMENT**



**DAY 2:  
SATURDAY, AUGUST 26  
RING 1 STARTS AT 9:00 A.M.  
FENCE LINE**



<  
**ELECTRICAL  
SUPPLIES  
(TO BE  
SOLD IN  
BULK)**

**★ (Over 500) Lots of New & Unused Lumber, Hardwood Flooring, Fencing & Building Materials, New & Unused Equipment, Hand & Power Tools, New Outdoor & Seasonal Items, Complete Liquidation of Electrical Contractor, Many Items to Be Sold in Bulk ★**

Some Items Listed Below Will Be Sold in Day 1.

**NEW & UNUSED EQUIPMENT & MISCELLANEOUS**

(Over 50) Lots of New and Unused Lumber; Fencing and Building Materials; (3) JBX 4000 48" Skid Steer Fork Attachments; (3) MUSTANG LF 88 Plate Compactors; MUSTANG ML 80S Rammer; (5) MUSTANG MP 4800 2" Submersible Pumps; MUSTANG 6500 DP Silent Diesel Generator; TRX HB 750 Skid Steer Hydraulic Hammer; (6) 2" x 50' Discharge Water Hoses; (4) 12-PLY 12 x 16.5 Skid Steer Tires; 8,800-Lb. HD 2-Post Auto Lift; (2) 20' Heavy-Duty Bi-Parting Wrought Iron Gates; (3) MUSTANG CV 3500 Concrete Vibrators; 10,000-Lb. Digital 4' x 4' Platform Scale; HUSKIE B65 Electric Jack Hammer; (2) HUSKIE 11218 SDS Hammer Drills; 80" 3 PTO HD Rotary Tiller; 30' x 85' x 15' and 30' x 40' x 15' Peak Ceiling Double-Door Storage Building, 12' drive through doors at (2) ends; (2) 10' x 20' Commercial Instant Pop-Up Tents; (2) 16' x 22' Marquee Event Tents, c/w: 320 sq. ft., (1) zipper door, (7) windows, heavy-duty frames and fabrics; (2) 20' x 40' Full Closed Party Tents, c/w: 800 sq. ft.,

doors, windows, (4) side walls included; HD Wheel Balancer; (2) 10' 20-Drawer HD Metal Work Benches; 80" HD Multi-Drawer Tool Cabinet; (2) 94" Hydraulic Skid Steer Dozer Blades; (2) 3 PTO HD Wood Chippers; (2) 8' x 10' Twin Wall Green Houses; 10-Ton Digital Floor Scale, c/w 78" platform (A&B); Skid Steer Hydraulic Trencher Attachment; 75-Ton Hydraulic Shop Press; 70" 3 PTO Flail Mower; 84" 4-in-1 Skid Steer Bucket.

**MISCELLANEOUS:** (Over 500) Lots of Assorted Electrical Equipment to Be Sold in Bulk! VERMEER HP300 Skid-Mounted Mixer, gas engine, 300-gallon tank; (3) 1998 ATLAS G40 Air Compressors; LINCOLN Power 150 Generator/Welder; LINCOLN TIG 275 Welder; AMMCO 6950 Brake Lathe; GORMANN Trash Pumps; Hedge Trimmers; 2-Man Augers; Chain Saws, Concrete Planer; Tile Saws; Sewer Snakes; (2) 21" LAVINA Concrete Polishers w/Blades and More!

## DAY 2: RING 2 STARTS AT 10:00 A.M.

★ Asset Seizures, Real Estate, (350+) Gov't Fleet Vehicles, Light Trucks, Boats, Buses & Motorcycles ★



LATE-MODEL PICKUP TRUCKS



2007 HD ULTRA CLASSIC MOTORCYCLE



(1 OF 3) 2011 POLARIS RANGERS



(OVER 350) GOV'T FLEET VEHICLES

### MOTORCYCLES, ATVS, BOATS & RVS

2014 BMW R1200RT Motorcycle; 2008 BMW R1200 RT-P Motorcycle; 2004 BMW R1150GS-P Motorcycle; 2007 HD Ultra Classic Motorcycle; 1999 KAWASAKI Prairie 400 ATV; (3) 2011 Polaris Ranger UTV Carts, gas engine, 2-passenger, 701-1,269 miles; 2009 YAMAHA Y2F-R6 Motorcycle; 2013 KAWASAKI Bayou 300 4x4 ATV; 2003 KAWASAKI Bayou 300 4x4 ATV; (2) EZ Golf Carts; SEARAY 27' Cabin Cruiser and Trailer; WESTERN RECREATION 31' RV Trailer, towable, electric brakes, shower, toilet, sinks, stove, oven, refrigerator/freezer.

### BUS

FORD Barth Mobile 2-Axle Office Truck, gas engine, auto. trans., Onan Marquis 6500 LP, A/C, 1,037 hours, 31,059 miles.

### ASSET SEIZURES, FLEET VEHICLES, LIGHT TRUCKS, VANS & SUVs

Government Fleet Vehicles, Partial Listing Including:

**AUTOMOBILES:** (8) 2011-2003 CHEVROLET Impalas; CHEVROLET Luminas; (2) 2009 CHEVROLET Hybrid Malibus; 2010 CHRYSLER 300 Touring; 2004 CHRYSLER Concorde LX; DODGE Stratus ES; FORD Contour; (35-50) 2011-1997 FORD Crown Victorias, (1) 2011 Flex Fuel; (2) 2007-2006 FORD Focus SE ZX3;

(15) 2009-2000 FORD Taurus; 2004 MAZDA 6 Hatchback; 1990 MERCEDES-BENZ XZ; (3) 2004-2000 PONTIAC Grand Prix; 2004 TOYOTA Camry; (2) 2007-2002 TOYOTA Prius, hybrid; (4) 2008-2006 DODGE Chargers; HONDA Civic, hybrid; BUICK LaCrosse.

**PICKUPS:** (Over 60) Pickup and Utility Trucks; 2015-2000 CHEVROLET, FORD, DODGE and GMCs, from 1/2-ton to 1-ton, some are 4x4, extended cab and/or diesel, some CNG. Some w/auto cranes, lift gates and dump beds. **Please Check Our Website for Daily Update!**

**VANS:** 2007 CHRYSLER Town & Country Touring Passenger; (4) 2003-2001 CHEVROLET Passenger Astros, low miles!; 2004 CHEVROLET Express 2500 Cargo, CNG; (3) 2010-2009 CHEVROLET Express 12-Passenger; 2007-2006 CHEVROLET Uplander; 2010 FORD E-350 Passenger, flex fuel; 2008 FORD E-350 XL Super-Duty Passenger; (2) 2001-1998 FORD Windstars; (3) 2003 FORD 350s, CNG; FORD E-150 Cargo; 2000 GMC Safari Passenger; (2) 2001 DODGE Ram 1500 Cargos; 2006 DODGE Caravan.

**SUVs:** 2001-2000 JEEP 4x4 Cherokees; 1997 JEEP 4x4 Wrangler; 2002 DODGE 4x4 Durango; 2008 FORD AWD Escape; (4) 2005-2003 FORD 4x4 Explorers and Expeditions; NISSAN 4x4 Pathfinder; 2001 SUBARU Outback 4WD Wagon; CHEVROLET Tahoe and Blazers.

**Partial Listing - More Vehicles Arriving After Brochure Deadline!  
Please Check Our Website For Additions! [www.1stcapitolauction.com](http://www.1stcapitolauction.com).**



RVS, BOATS, ATVS AND MORE



(OVER 350) GOV'T FLEET VEHICLES



(OVER 60) ASSORTED SERVICE TRUCKS



2005 GMC C7500 BUCKET TRUCK

## ONLINE ONLY AUCTION #1

### POSTAL STEP VANS

**Bidding Starts August 6  
and Ends August 29**

**(Over 60) Assorted Steps  
Vans to Be Sold**

(48) 2002 FREIGHTLINER Grumman Olson Step Vans, Cummins diesel engine, auto. trans., non-compliant.



**Call for Inspection Dates and Special Terms and Conditions.**

## ONLINE ONLY AUCTION #2

### iPhones

**Bidding Starts August 6  
and Ends August 29**

**(112) iPhones SE iPhones**

(112) New and Unused iPhone SE, iPhones SE-16GB, unlocked, space grey.

**Call for Inspection Dates and Special  
Terms and Conditions.**



**TERMS & CONDITIONS:** Additional terms and conditions available day of sale, or visit [www.1stcapitolauction.com](http://www.1stcapitolauction.com). **A 15% Buyer's Premium will apply to all items sold!**

**LOCATION & DIRECTIONS:** 50 Solano Avenue, Vallejo, CA. Interstate 80 to 780 West. Then to second light (Solano Avenue) and left to auction site on right side. Check our website [www.1stcapitolauction.com](http://www.1stcapitolauction.com) for map.

**DAY 1: FRIDAY, AUGUST 25 AT 9:00 A.M.**

Late-Model Construction, Rental Equipment, Large Trucks, Trailers & More

**DAY 2: SATURDAY, AUGUST 26 AT 9:00 A.M.**

**RING 1:** Fence Line, (Over 500) Lots of New & Unused Lumber, Hardwood Flooring, Fencing & Building Materials, New & Unused Equip., Hand & Power Tools, New Outdoor & Seasonal Items, Complete Liquidation of Electrical Contractor, Many Items to Be Sold in Bulk  
**RING 2:** Asset Seizures, Real Estate, (350+) Gov't Fleet Vehicles, Light Trucks, Boats, Buses & Motorcycles **ONLINE ONLY SALE** - Bidding Starts August 6 and Ends August 29

**INSPECTION:** Thursday, August 24 from 9:00 A.M. - 4:30 P.M. No inspection during auction.

**REGISTRATION:** You must register in order to bid. A valid driver's license is required for registration. If you are registering as a dealer you will need a copy of your Dealer's License and Seller's Permit. Your bidder number is a contractual document and you are responsible for anything sold to that number. Guard it carefully. No one under the age of 21 years old is allowed on any piece of equipment. **NO CHILDREN OR PETS.**

**For complete terms and conditions visit [www.1stcapitolauction.com](http://www.1stcapitolauction.com)**

## AUCTION CALENDAR

**FIRST CAPITOL THE AUCTION COMPANY**

- A California Joint Venture Company -

### SOUTHERN CALIFORNIA LOCATION

PHONE (951) 657-5300 • FAX (951) 657-5244  
4461 WADE AVE., PERRIS, CA 92571  
Website: [www.theauctioncompany.net](http://www.theauctioncompany.net)

**SATURDAY, OCTOBER 28  
DEADLINE: OCTOBER 6**

CONSTRUCTION EQUIPMENT,  
TRUCKS, TRAILERS,  
AUTOS & MORE

### NORTHERN CALIFORNIA LOCATION

PHONE (707) 552-0739 • FAX (707) 552-8613  
50 SOLANO AVE., VALLEJO, CA 94590  
Website: [www.1stcapitolauction.com](http://www.1stcapitolauction.com)

**FRI. & SAT., OCTOBER 27 & 28  
DEADLINE: OCTOBER 6**

CONSTRUCTION EQUIPMENT, TRUCKS  
& TRAILERS, GOVERNMENT FLEET  
& ASSET SEIZED VEHICLES

# Auction Held Rain or Shine

# NO MINIMUM ★ GOVERNMENT ENDORSED PUBLIC AUCTION

## GOV'T FLEET VEHICLES FROM OVER 35 SAN FRANCISCO BAY AREA CITIES, COUNTIES & MUNICIPALITIES



ASSORTED ELECTRIC  
BOOM LIFTS



ASSORTED SCISSOR LIFTS



INGERSOLL RAND  
SKID-MOUNTED  
AIR COMPRESSORS



2011 KOMATSU PC78US-8 HYDRAULIC EXCAVATOR

(4) 2007-2006 JLG E300AJP Articulated Boom Lifts, electric, 30', narrow, rotating jib, 327-1,205 hours, s/n 0300093024, 094237, 111849, 112759.

GENIE TMZ 34 Towable Manlift, electric, 40', height, 18' reach.

2008 JLG 4069 Scissor Lift, electric, 40', 336 hours, s/n 0200190616.

2007 JLG 1930ES Scissor Lift, electric, 19' narrow, 219 hours, s/n 0200160604.

(9) 2011-2010 JLG 1230ES Scissor Lifts, electric, 12', 88-188 hours, s/n 0200197771, 198740, 200288, 200628, 200926, 200962, 200922, 201407, 201305.

(2) 2010-2007 JLG 20MLV Scissor Lifts, electric, 20', 96 and 157 hours, s/n 0130015376, 09164.

2006 GENIE GS-2668R Scissor Lift, electric, 26', s/n GS680645951.

(2) 2010 GENIE GR-12 Scissor Lifts, electric, 12', 235 and 239 hours, s/n GR1015141, GR1015171.

2005 HAULOTTE Star 22J Personnel Lift, electric, 22', 28' reach, 151 hours, s/n ME102605.

2011 GENIE DPL30S Scissor Lift, electric, 30', s/n DPL11-1968.

### GENERATORS, AIR COMPRESSORS, STEAM CLEANERS, LIGHT TOWERS & PUMPS

MULTIQUIP DCA60 S51 Towable Generator, Isuzu diesel engine, 3-phase, 34.6 kW, s/n 3668800.

MULTIQUIP 45 DCA45US12 Towable Generator, Isuzu diesel engine, 3-phase, 26 kW, s/n 8201813.

(2) MAGNUM MMG35FH Towable Generators, John Deere diesel engine, 3-phase, 33 kva, 25 kW, 480 v, 104 amp, 6,530 and 16,425 hours, s/n 07339, 1103688.

(2) HIPOWER 75 HRJW75 T6 SA 60HZ Towable Generator, John Deere diesel engine, 3-phase, 60 kW, s/n 12100379.

WACKER G110 MGT35 Towable Generator, engine needs work, generator works, s/n 5614585.

POWER PRO 150 SDG150S Towable Generator, diesel engine, s/n 1726A60211.

2003 GENERAC SD0100 2000 Series Towable Generator, Generac diesel engine, 3-phase, 100 kW, 125 kva, 480 v, 346 amp, pintle hitch, 14 hours.

(2) INGERSOLL RAND SSR HP300 Skid-Mounted Air Compressors, electric, 1,150 CFM, 460 v, 300 HP drive motor.

(2) INGERSOLL RAND SSR EP150 Skid-Mounted Air Compressors, electric, 670 CFM, 460 v, 150 HP drive motor.

ATLAS COPCO 185 CFM Towable Air Compressor, pintle hitch.

2013 SHARK SSD-603567E/G Trailer-Mounted Steam Cleaner, diesel, 3,000-3,999 PSI.

(2) ARROW MASTER Arrow Boards, solar.

COLEMAN Rite-Lite MB 4000 Towable Light Tower, Kubota diesel engine, (4) lights, ball hitch, 3,769 hours.

GORMAN RUPP 16A3 Skid-Mounted 6" Pump, Duetz diesel engine.

### LANDSCAPING EQUIPMENT & TRENCHERS

2002 FORD F-550 XL SD Chipper Dump Truck, Ford diesel engine, auto. trans., Arbotech 101 chipper/dump bed, CA Retrofit.

2002 FORD F-550 SL SD Chipper Dump Truck, Ford diesel engine, auto. trans., Dailey/Arbotech chipper/dump bed, CA Retrofit.

2006 BANDIT 1590 Intimidator Chipper, John Deere diesel engine, 15' max. cap., self-feeding, rear winch 366 hours.

BRUSH BANDIT 200+ Towable Brush Chipper, Cummins diesel engine, 12' max. cap., pintle hitch.

2011 DITCH WITCH RT45 Ride-On Trencher, diesel engine, 35-49 HP, 993 hours, s/n CMWH314XTB0002060.

DITCH WITCH RT40 Ride-On Trencher.

VERMEER Log Splitter.

2009 HUSTLER Mower, s/n 09111047.

2009 WALKER Mower, 92" mower deck, s/n 99833.

### TRUCK TRACTORS, DUMP & BUCKET TRUCKS

(2) 2009 PETERBILT 386 Truck Tractor, Caterpillar diesel engine, tandem, 4WD, Eaton Fuller 18-speed trans., sliding 5th wheel, wet kit.

2004 PETERBILT 385 3-Axle Cab and Chassis, Caterpillar diesel engine, manual trans.

2002 FREIGHTLINER FL112 Dump Truck, Caterpillar diesel engine, Allison auto. trans., Muncie PTO, WTF dump bed, non-compliant.

1999 STERLING SC7500 5-Yard Dump Truck, Cummins diesel engine, Allison auto. trans., WTF dump bed, CA Retrofit.

2000 GMC C8500 Dump Truck, Caterpillar diesel engine, Allison auto. trans., Munico PTO, Heil dump bed, CA Retrofit.

2005 GMC C7500 Bucket Truck, Caterpillar diesel engine, Allison auto. trans., Versalift insulated boom, 40' bucket, 833 hours, CA Retrofit.

2000 FREIGHTLINER FL80 Bucket Truck, Cummins diesel engine, Altec boom, 26,500 miles.

### FIRE ENGINES

1994 SPARTAN 3-Axle Pumper/Ladder Truck, Detroit diesel engine, Allison HD 4060 w/retarder, 100' ladder, 1,504 GPM Hale pump, Akron 200 PSI water cannon.

1994 HI TEC Fire Truck.

1991 KME Firefox Pumper Truck, Detroit diesel engine, Allison auto. trans., KME fire apparatus pumper body w/Hale pump.

1990 SPARTAN 1000 EE 25 Pumper Truck, Detroit diesel engine, Allison HTB741 auto. trans. w/retarder, Hale fire pump.

1984 SPARTAN RS20-2042 Pumper Truck, Detroit diesel engine, Allison HT740 auto. trans., Waterous pump.

1982 SEAGRAVE PB-24507 Pumper Truck, Detroit diesel engine, Allison auto. trans., Waterous CSYC water pump 1,250 GPM MT644.

1996 FORD F-350 Brush Fire Truck.

1991 FORD F-800 Heavy Rescue Truck, 7.8 litre diesel engine, Hackney bed, Kohler 10 kW generator.



2013-2008 KOMATSU PC30MR-3  
MINI EXCAVATOR



GRADALL 534C-9 4X4 TELEHANDLER



BRODERICKSON IC-80-IE CARRY DECK CRANE



2012 TEREX TSV50 SKID STEER LOADER

**Auction Held Rain or Shine**

**Call for Additions or Deletions. Items That Are Still on Rent May Be Substituted.**



# FIRST CAPITOL AUCTION INC.

COMMERCIAL LIQUIDATORS & APPRAISERS

50 Solano Ave., Vallejo, CA 94590

For more information call (707) 552-0739

Visit our Website at [www.1stcapitolauction.com](http://www.1stcapitolauction.com)

or e-mail us at: [auctioncap@aol.com](mailto:auctioncap@aol.com)

Liquidators & Appraisers CSL #A1621

2-DAY ★ NO MINIMUM ★ NO RESERVE

## PUBLIC AUCTION

Bay Area Contractors ★ Herc Rentals  
Over 35 Gov't Agencies & Municipalities

DAY 1: FRIDAY, AUGUST 25 AT 9:00 A.M.

★ RING 1: Late-Model Construction, Rental Equipment,  
Large Trucks & Trailers ★

DAY 2: SATURDAY, AUGUST 26 AT 9:00 A.M.

★ RING 1: Fence Line, (Over 500) Lots of New & Unused Lumber,  
Hardwood Flooring, Fencing & Building Materials, New & Unused  
Equip., Hand & Power Tools, New Outdoor & Seasonal Items,  
Complete Liquidation of Electrical Contractor, Many Items to Be Sold  
in Bulk RING 2: Asset Seizures, Real Estate, (350+) Gov't Fleet  
Vehicles, Light Trucks, Boats, Buses & Motorcycles **ONLINE ONLY**  
**SALE** – Bidding Starts August 6 and Ends August 29 ★

50 SOLANO AVENUE, VALLEJO, CALIFORNIA 94590

OS-0038885



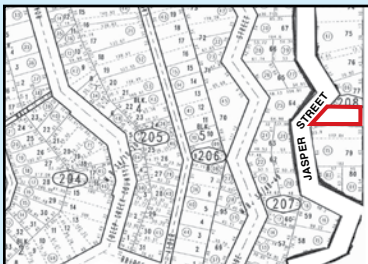
Presorted  
First Class Mail  
U.S. Postage  
PAID  
Eugene, Oregon  
Permit No. 17



# REAL ESTATE PROPERTY AUCTION

Real Estate Lots to Be Sold at the First Capitol Auction Facility  
Before the Fleet Vehicles (Approximately 11:00 A.M.)

Inspection Available the Week of August 21–25, 2017 Only!



### PROPERTY 1

1 Lot Near Lake Arrowhead  
on Jasper Street

Tract 2469, Lakebrook Park No. 10 PTN,  
Lot 78, APN #0330-208-05-0000  
San Bernardino County, California  
All Taxes Paid



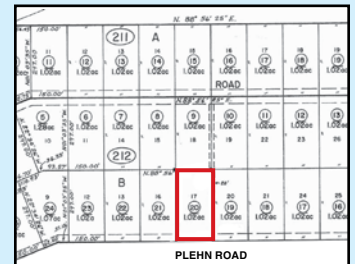
### PROPERTY 2

2-1/4 Acres on Jackson Avenue,  
Twin River Ranchos  
Unit 3, Lot 2, Block 11,  
APN #025-011-002  
Elko County, Nevada  
All Taxes Paid



### PROPERTY 3

1/4 Acre on Lake Park Drive,  
Century Ranch  
Unit B1, Lot 57,  
APN #030-320-010-000  
Colusa County, California  
All Taxes Paid



### PROPERTY 4

1 Acre on Plehn Road,  
California Pines Lake  
Lot 17, Block B, Unit 3,  
APN #040-212-002-000  
Modoc County, California  
All Taxes Paid



# FIRST CAPITOL AUCTION INC.

LIQUIDATORS & APPRAISERS ★ (707) 552-0739 ★ Vallejo, CA