

# 2-DAY PUBLIC AUCTION

**FIRST CAPITOL AUCTION INC.**

Northern California's Leading Auction Company

**MULTI MILLION DOLLAR ★ NO MINIMUM ★ NO RESERVE**

**FRIDAY & SATURDAY, APRIL 27 & 28 AT 9:00 A.M.**  
50 Solano Avenue, Vallejo, California, San Francisco Bay Area

Bay Area Contractors ★ Herc Rentals ★ Over 35 Gov't Agencies & Municipalities

**DAY 1: FRIDAY, APRIL 27 AT 9:00 A.M.**

Late-Model Construction, Rental Equipment, Large Trucks, Trailers, Lumber & More



1 OF 6

2006 JLG 860SJ 4X4 BOOM LIFT



GEN SETS UP TO 400KW

2007 CATERPILLAR D6N  
LGP CRAWLER TRACTOR



LOW HOURS

(1 OF 3) 2013 JOHN DEERE 85D  
HYDRAULIC EXCAVATORS WI/THUMBS



ONLY 15 HRS.

2016 JOHN DEERE 5055E UTILITY TRACTOR



ONLY 1,100 HRS.

2013 JLG G6-42A TELEHANDLER



LOW HOURS

2013 BOBCAT T750 TRACK SKID LOADER



LOW MILES

2012 FREIGHTLINER M2-106 14-YD DUMP TRUCK



ONLY 2,320 HRS.

2012 CASE 580N 4X4 BACKHOE LOADER

**DAY 2: SATURDAY, APRIL 28 – 3 RINGS STARTING AT 9:00 A.M.**

**RING 1:** Fence Line, (Over 500) Lots of New & Unused Lumber, Hardwood Flooring, Fencing & Building Materials, New & Unused Equip., Hand & Power Tools **RING 2:** Asset Seizures, Real Estate, (350+) Gov't Fleet Vehicles, Light Trucks, Boats, Buses & Motorcycles **RING 3:** Coins, Money, Jewelry, Personal Property, Computers & More



**FIRST CAPITOL AUCTION INC.**

LIQUIDATORS & APPRAISERS

50 Solano Avenue, Vallejo, California 94590

Phone (707) 552-0739 • Fax (707) 552-8613

www.1stcapitolauction.com • e-mail: auctioncap@aol.com

LIVE INTERNET  
BIDDING Available Through  
proxibid.com.™

**INSPECTION:**

Thursday, April 26 from  
9:00 A.M. – 4:30 P.M.



# DAY 1: FRIDAY, APRIL 27 AT 9:00 A.M.

LATE-MODEL CONSTRUCTION, RENTAL EQUIPMENT, LARGE TRUCKS, TRAILERS & MORE



**2010 DITCH WITCH FX60 TOWABLE VACUUM EXCAVATOR**



**2014 JOHN DEERE 319E TRACK SKID LOADER**



**FORD 8210 4X4 UTILITY TRACTOR**



**JOHN DEERE 210C 4X4 SKIP LOADER**



**ASSORTED 2007-2006 BOOM LIFTS UP TO 85' REACH**

## CRAWLER TRACTOR, HYDRAULIC & VACUUM EXCAVATORS

**2007 CATERPILLAR D6N LGP Crawler Tractor**, 12' 6-way blade, 24" tracks, cab, heat/AC, s/n DJY00562, 18,489 hours.

(3) **2013 JOHN DEERE 85D Hydraulic Excavators**, thumb, enclosed cab, rubber tracks, s/n's 1FF085DXACG017098, 17158/ 2,923, 2,711, 2,283 hours.

**JOHN DEERE 27D Hydraulic Mini-Excavators**, Yanmar diesel eng., quick release 24" bucket, backfill blade, rubber tracks, canopy, s/n 1FFD27DXVCG1257215, 1,569 hours.

**2010 DITCH WITCH FX60 Towable Vacuum Excavator**, 4-cyl. diesel eng., 800-gal. tank, 100-gal. fresh water tank, pintle hitch, s/n CMWFEX60XE0000416, 1,378 hours.

**STANLEY MBX308 Hydraulic Breaker Attachment**.

(5) **2013 STANLEY MBX15 Breaker Attachments**, 1,251-1,800-lb.

## BACKHOES & SKIP LOADERS

**2012 CASE 580N 4X4 Backhoe Loader**, cab, heat/AC, GP bucket, extend-a-hoe, diesel eng., s/n JJGN580NVCC560457, 2,320 hours.

**CASE 580K Backhoe Loader**, GP bucket, extend-a-hoe, canopy.

**CATERPILLAR 416 Backhoe Loader**, GP bucket, extend-a-hoe, canopy, s/n 5P000951.

**NEW HOLLAND 545D 4X4 Skip Loader**, 4-in-1 bucket, Gannon scraper box, PTO, aux. hyd., 3-pt. hitch, canopy, s/n A442675.

**FORD 445C 4X4 Skip Loader**, GP bucket, Gannon scraper box, PTO, aux. hyd., 3-pt. hitch, canopy, front hyd., s/n A408452.

**JOHN DEERE 210C 4X4 Skip Loader**, GP bucket, Gannon scraper box, canopy, s/n T0210CE790180, non-compliant.

## SKID STEER LOADERS & UTILITY TRACTORS

**2013 BOBCAT T750 Track Skid Loader**, diesel eng., GP bucket, Hi Flow, aux. hyd., rubber tracks, cab, heat/AC.

**2014 JOHN DEERE 319E Track Skid Loader**, OROPS, rubber tracks, smooth bucket, standard controls, aux. hyd., s/n 1T0319EACEJ269005, 1,003 hours.

**2013 CATERPILLAR 252B Skid Steer Loader**, GP bucket, OROPS, s/n CAT0252BKTNK01913, 4,073 hours.

(2) **BOBCAT 963 Skid Steer Loaders**, GP bucket, 5,059 and 3,437 hours.

**BOBCAT 843 Skid Steer Loader**, Isuzu diesel eng., GP bucket, aux. hyd., canopy, foam filled tires.

(2) **2016 JOHN DEERE 5055E 4X4 Utility Tractors**, aux. hyd., roll bar, 14.9x28 rear and 9.5x24 front tires.

**JOHN DEERE 650 Utility Tractor**, GP bucket, Ford 917L mower attachment, PTO, 3-pt. hitch.

**JOHN DEERE 401C Utility Tractor**, GP bucket, 3-pt hitch, PTO, aux. hyd., canopy, 16.9x24 rear and 11x15 front tires, s/n 385076T, non-compliant.

**FORD 8210 4X4 Utility Tractor**, 3-pt. hitch, PTO, aux. hyd., roll bar, 18.4x38 rear and 14.9x28 front tires, s/n BC19677, non-compliant.

**FORD 545C 4X4 Utility Tractor**, GP bucket, Gannon scraper box, canopy.

**KUBOTA M7500 DT 4X4 Utility Tractor**, GP bucket, 3-pt. hitch, 2,795 hours.

## COMPACTION & PAVING EQUIPMENT

**2008 ASPHALT Zipper A2-500B Asphalt Grinder**, John Deere diesel eng., 12" depth, 48" width, rotating and SS loader mount, ball hitch, s/n 50000460.

**2013 BOMAG BW120AD Double-Drum Roller**, diesel eng., 47" drums, 3-ton, s/n 861880231054, 795 hours.

**2013 VOLVO DD15 Double-Drum Roller**, gas eng., 15" drums, s/n VCE00D15J0S270029.

**INTERNATIONAL E211 Scraper**, 11-yd. scraper box, canopy, s/n 000834X.

## TELEHANDLERS & FORKLIFTS

**2013 JLG G6-42A Telehandler**, s/n 16005303, only 1,100 hours.

**2007 JLG G9-43A Telehandler**, 9,000-lb. cap., 44' 3-stage mast, ROPS, s/n 160024684, 3,021 hours.

**2011 TOYOTA 8FGU25 Warehouse Forklift**, 5,000-lb. cap., 3-stage mast, s/n 8FGU2536928, 1,794 hours.

**TOYOTA 3FGL20 Warehouse Forklift**, gas eng., 4,000-lb. cap., 2-stage mast, canopy.

## BOOMLIFTS

**2006 JLG 860SJ 4X4 Boom Lift**, Deutz diesel eng., 86' platform height, 75' platform reach, reconditioned by JLG in 2014.

**2006 JLG 800S Boom Lift**, 80' platform height, 4WD, diesel eng., 932 hours.

**2006 JLG 600AJ Boom Lift**, 60' platform height, 4WD, diesel eng., 786 hours.

**2007 JLG 600A Boom Lift**, 60' platform height, 4WD, duel fuel, 1,589 hours.

**2008 JLG 450AJ Articulated Boomlift**.

**2007 GENIE Z-60/34 Boom Lift**, 60' platform height, jib, 4WD, diesel eng., 434 hours.

**2001 JLG 400S Boom Lift**, 40' platform height, dual fuel.

**2008 GENIE Z-45/25J Boom Lift**, 45' platform height, electric, 1,235 hours.

**2007 JLG E300AJP Boom Lift**, 30' platform height, narrow boom, rotating jib, electric, 511 hours.

**2013 GENIE AWP-30S Mast Lift**, push around, stabilizers, electric.

## SCISSOR & PERSONNEL LIFTS

(6) **2011 GENIE GS-3232 Scissor Lifts**, 32' platform height, stabilizers, electric.

(2) **2011-2007 GENIE GS-1930 Scissor Lifts**, 19' platform height, narrow, electric.

**2010 JLG 3246 ES Scissor Lift**, 32' platform height, electric.

(2) **2011 JLG 2646 ES Scissor Lifts**, 26' platform height, electric.

(4) **SKYJACK 3220 Scissor Lifts**, 20' platform height, electric.

**2013 GENIE SLC-24 Material Lift**, 650-lb. cap., 24' platform height.



**CATERPILLAR 416 BACKHOE LOADER**



**(6 OF 8) 2011 ATLAS COPCO XAS185JD AIR COMPRESSORS**



**2008 ASPHALT ZIPPER A2-500B GRINDER**

**3 WAYS TO BUY AT A FIRST CAPITOL AUCTION**

★ Live Onsite ★ Absentee Bid ★ Simulcast on the Internet @ [www.proxibid.com](http://www.proxibid.com)

# NO MINIMUM ★ GOVERNMENT ENDORSED PUBLIC AUCTION

## GOV'T FLEET VEHICLES FROM OVER 35 SAN FRANCISCO BAY AREA CITIES, COUNTIES & MUNICIPALITIES



2013-2010 MAGNUM LIGHT TOWERS

OVER 20



2007 TORO AERATOR 800



2011 INGERSOLL-RAND 375WJD AIR COMPRESSORS

2 OF 4



2007 JLG G9-43A TELEHANDLER

### AIR COMPRESSORS

(4) 2011-2010 INGERSOLL RAND XP 375 Towable Air Compressors, John Deere diesel eng., 375 CFM, pintle hitch, from 3,110 hours.

2011 INGERSOLL RAND P185 Towable Air Compressor, John Deere diesel eng., 185 CFM, pintle hitch.

(8) 2012-2011 ATLAS COPCO XAS185 Towable Air Compressors, John Deere diesel eng., 185 CFM, ball hitch.

ATLAS COPCO XAS 96 Towable Air Compressor, John Deere diesel eng., 185 CFM, ball hitch.

### GENERATORS & LIGHT TOWERS

2014 DOOSAN G85 Towable Generator, Cummins diesel eng., 3-phase, 68 kW, 85 kva, 60 hz, 480 v, 236 amp, pintle hitch, 4,287 hours.

2011 WACKER Neuson G180 Towable Generator, John Deere diesel eng., 3-phase, 143 kW, 179 kva, 60 hz, 480 v, 850 amp, pintle hitch, 8,900 hours.

2008 MULTIQUIP DCA 400SS Towable Generator, Wacker diesel eng., 3-phase, 8,800 hours.

(2) KOHLER 45RZ202 45 kW Generators, CNG 6-cyl. Ford eng., 468-809 hours.

KOHLER 30 kW Generator, John Deere 4-cyl. diesel eng., 434 hours.

SIEMANS Y355 Towable Generator, Lister diesel eng., 3-phase, 19.6 kW, 24.5 kva, 60 hz, 68 amp, 208 v, pintle hitch.

KATOLIGHT D 250 Skid Mounted Generator, Volvo diesel eng., 3-phase, 250 kW, 312.5 kva, 60 hz, 376 amp, 480 v.

MECON 500 FDF Skid Mounted Generator, Detroit diesel eng., 3-phase, 200 kW, 250 kva, 60 hz, 301 amp.

WAUKESHA Enginator, 3-phase, 480/277 v, 65 hz, 190 kW.

(27) 2013-2010 MAGNUM MLT 3060 Towable Light Towers, Kubota diesel eng., (4) lights, pintle hitch.

### MOWERS & LANDSCAPING EQUIPMENT

TORO Ground Master 580-D 4X4 Ride-On Mower, Kubota diesel eng., front and side mower decks, cab, heat/AC, s/n 240000181.

EXMARK Lazer Z XP Ride-On Mower, 3-cyl. diesel eng., 72" mower deck.

2008 TORO Multi-Pro 5700D Low Profile Spray Rig, 300-gal. tank, only 383 hours.

### UTILITY CARTS

2014 POLARIS Brutus 900 4X4 Utility Cart, Yanmar diesel eng., manual dump bed, canopy, 1,012 hours.

2014 POLARIS Ranger 4X4 Utility Cart, Yanmar diesel eng., manual dump bed, canopy, 1,090 hours.

2014 POLARIS Ranger Crew 4-Passenger 4X4 Utility Cart, Kohler diesel eng., manual dump bed, 1,239 hours.

2014 POLARIS R15RUAD1AA UTV Utility Cart, diesel eng., 4-passenger, 1,070 hours.

2012 POLARIS Ranger UTV Utility Cart, gas eng., 4-passenger, 1,598 hours.

2011 POLARIS Ranger UTV Utility Cart, diesel eng., 2-passenger, 541 hours.

2013 CUSHMAN 1600XD UTV Utility Cart, diesel eng., 2-passenger, 921 hours.

(2) 2012 CUSHMAN 1600 XD 4X4 Utility Carts, 3-cyl. diesel eng., manual dump bed, canopy, 805 hours.

2012 KUBOTA RTV400 UTV Utility Cart, diesel eng., 2-passenger, s/n 14087, 840 hours.

### DUMP, WATER & DERRICK TRUCKS

2012 FREIGHTLINER M2-106 14-Yd. Dump Truck, Cummins diesel eng., Eaton Fuller manual trans., 44,200 miles, Ledwell dump bed, D.E.F. system.

(3) VOLVO-WHITE-GMC 10-Yd. Dump Trucks, Caterpillar diesel eng., Eaton Fuller manual trans., 3-axle, Heil 10-yd. dump bed, CA retrofit.

(2) 2002 STERLING 2-Axle Dump Trucks, Cummins diesel eng., auto. trans., (1) w/plow, CA retrofit.

2001 FREIGHTLINER FL-70 Flatbed Dump, Mercedes-Benz diesel eng., auto. trans., CA retrofit.

CHEVROLET Kodiak Dump Truck, Caterpillar diesel eng., auto. trans.

1994 INTERNATIONAL 4900 6X4 Dump Truck, DT466 eng., Allison auto. trans., Dailey dump bed.

PETERBILT 378 10-Yd. Dump Truck, Cummins diesel eng., Eaton Fuller manual trans., rock dump bed, 3-axle.

2001 ISUZU NQR 2-Axle Dump Truck, Isuzu diesel eng., auto. trans., Knapheide dump bed, Tommy gate, CA retrofit.

FORD F-Series Chip/Dump Truck, gas eng., auto. trans., High Ranger boom, outriggers, Stahl dump bed.

(2) FORD L8000 2-Axle Dump Trucks, Cummins diesel eng., manual trans., high side dump bed.

2005 FORD F-650 Water Truck, Cummins 5.9 diesel eng., Eaton trans., 2,000-gallon, 16,750 miles.

1994 INTERNATIONAL 4700 Digger Derrick Truck, DJ408 diesel eng., Allison auto. trans., Simon Telelect 92-45 derrick.

### CRANE, BUCKET & FIRE TRUCKS

2001 FREIGHTLINER FL-70 Crane Truck, Mercedes-Benz diesel eng., auto. trans., CA retrofit.

SWINGMASTER 181TC Hi-Rail R.T. Crane, 8,000-lb. cap., 27' load radius, 4x4, heat/AC.

2013 CHEVROLET Express Bucket Cargo Van, gas eng., auto. trans., Altec 350-lb. cap. non-insulated bucket, only 6,300 miles.

2008 FORD F-450 Bucket Truck, Ford diesel eng., auto. trans., Hi Ranger LT38, 38' insulated bucket.

2000 FORD F-450 Bucket Truck, gas eng., auto. trans., 37' non-insulated boom height.

2001 FORD F-550 Bucket Truck, gas eng., auto. trans., Altec utility bed, 37' insulated boom.

2001 FORD F-550 Utility Bucket Truck, gas eng., auto. trans., Altec 350-lb. cap. 37.5' non-insulated bucket, hydraulic hose reel, Knapheide utility/bucket body.

FORD F-600 Bucket Truck, diesel eng., auto. trans., CA Retrofit.

1989 PIERCE Lance Ladder Pumper Truck, diesel eng., auto. trans., w/water cannon, 75" aerial ladder.

1982 SEAGRAVE HT-20765 Hook and Ladder Fire Truck, Detroit diesel eng., auto. trans.

1988 SEAGRAVE Fire Pumper Truck, Cummins diesel eng., manual trans., CA retrofit.



JOHN DEERE 27D MINI EXCAVATOR

LOW HOURS



2013 BOMAG AND VOLVO COMPACTION EQUIPMENT



2008 JLG 450AJ ARTICULATING BOOM LIFT



2- AND 4-PASSENGER UTV CARTS (GAS AND DIESEL)

3 OF 10

AUCTION HELD RAIN OR SHINE!





**DAY 1: FRIDAY, APRIL 27, CONTINUED**



(OVER 40) POSTAL VANS



2000 VOLVO REFUSE TRUCKS



2001 FREIGHTLINER FL70  
BOOM TRUCK



(1 OF 12) 2- AND 3-AXLE  
DUMP TRUCKS

**GARBAGE, RODDER & VACTOR TRUCKS**

(2) 2000 VOLVO 3-Axle Refuse Trucks, Volvo diesel eng., Allison auto. trans., Leach rear loader, CA retrofit.

CCC 3-Axle Refuse Truck, Cummins diesel eng., auto. trans., Heil rear loader, CA retrofit.

2001 International 2574 3-Axle Vactor Truck, Caterpillar diesel eng., Allison auto. trans., CA retrofit.

1993 INTERNATIONAL 4600 Vactor Truck, International diesel eng., Spicer 5-spd. trans., vactor.

**STEP VANS & FLAT BEDS**

(19) 2002 FREIGHTLINER Grumman Olson Step Vans, Cummins diesel eng., auto. trans., non-compliant.

GMC Grumman Olson Step Van, gas eng., auto. trans., Western Mule fold away crane, Onan generator.

FREIGHTLINER FL70 Flat Bed, Caterpillar diesel eng., Eaton Fuller manual trans.

FORD 700 Flat Bed Truck, gas eng., manual trans.

**TRAILERS & SEA CONTAINERS**

TRAIL KING 1944 Dovetail Equipment Trailer, 40,000-lb. cap., 84,100 GVW.

MILLER GT 2-Axle Equipment Trailer, tilt deck, pintle hitch, 24,000 GVWR.

DYNAWELD 2-Axle Equipment Trailer, tilt deck, pintle hitch, 50,000 GVWR.

ZIEMAN 2325 Equipment Trailer, 2-axle, tilt deck.

JLG 2-Axle Drop Deck Trailer, hydraulic.

2012 CARRY-ON 6 x 12 Enclosed Cargo Trailer, single-axle.

2011 CARRY-ON 6 x 12 Enclosed Cargo Trailer, single-axle.

LEE BOY Trailer Mounted Asphalt Sealer, gas pump, hose reel, LP burner.

WANCO Towable Arrow Board, solar, pintle hitch.

(8) 40' Sea Containers.

(6) 20' Sea Containers.



ASSORTED LADDER  
AND PUMPER TRUCKS



(1 OF 7) ASSORTED  
BUCKET TRUCKS



(3) 2003 MOTOR COACH D4500  
57-SEAT BUSES



2001 INTERNATIONAL 2574  
VAC TRUCK

**DAY 2: SATURDAY, APRIL 28**

**RING 1 STARTS AT 9:00 A.M. – FENCE LINE**

**Some Items Listed Below Will Be Sold in Day 1**

(Over 500) Lots of Hand and Power Tools, New and Unused Lumber, Fencing and Building Materials, (300) Stack Chairs, Pallet Jacks, Airless Paint Sprayers, Tillers, Dehumidifiers, Breakers, Chipping Guns, Engine Hoists, Pressure Washers, Fans, Shark Pressure Washers, and More!

**NEW & UNUSED EQUIPMENT & MISCELLANEOUS**

(Over 50) Lots of New Lumber to Be Sold Day 1 and 2; 2002 CRAM-A-LOT DBR-60-LU Bailer/Compactor; (3) APT 160 Breakers; 2012 RIDGID 535 Pipe Threader; 2010 RIDGID 41935 Pipe Threader; 700 POWER PONY, s/n EE650651209; (2) JBX 4000 48" Fork Attachment; (3) MUSTANG LF 88 Compactors; MUSTANG ML 80S Rammer; (4) MUSTANG MP 4800 2" Submersible Pumps; MUSTANG 6500 DP Diesel Generator; (2) HUSKY B65 Electric Jack Hammers; 250 AMP Electric Arc Welder; (2) 12-Ply 12x6.5 Skid Steer Tires; (1) 3-Pc. Air Spray Gun Kit; (2) New 4-Pack 10,000-lb. Ratchet Cargo Straps; (2) 2" x 50' Discharge Water Hoses; (2) MUSTANG CV 3500 Concrete Vibrators; (2) TRX HB750 Skid Steer Hydraulic Hammers; (5) 3-Pc. 14" Premium Diamond Blades; (4) 25' 800 Amp Extra HD Booster Cables; Towable Log Splitter; (2) Post 9,000-Lb. Car Lifts; Backhoe Loader Attachment; Skid Steer Dozer Blades; Wrought Iron Gates; Fork Attachment; 3-Pt. Tiller Attachment; Wheel Balancer;



NEW AND UNUSED  
ATTACHMENTS AND MISC.



ASSORTED NEW AND UNUSED  
LUMBER TO BE SOLD 27 AND 28



OVER 12  
Tire Changer; 30 x 65 x 15 Shelter; 30 x 40 x 15 Shelter; 20 x 30 x 12 Shelter; 10 x 10 Pop-Up Tents; 20 x 40 Party Tent; 10' Metal Work Bench; Green House; 2012 NATIONAL Floor Stripper. **Partial Listing.**

20' AND 40'  
CONTAINERS  
TO BE SOLD  
FRIDAY, APRIL 27

# DAY 2, RING 2: SATURDAY, APRIL 28 AT 10:00 A.M.

★ Asset Seizures, Real Estate, (350+) Gov't Fleet Vehicles, Light Trucks, Boats, Buses & Motorcycles ★



SKYLINE TOY HAULER 5TH WHEEL



(OVER 25) ASSORTED SUVs



(OVER 350) FLEET VEHICLES



2013 CHEVROLET BUCKET VAN

ONLY  
6,300 HRS.

## MOTORCYCLES & QUAD

- 2004 HARLEY DAVIDSON Road King.
- 2004 BMW 1100R Motorcycle.
- 2000 KAWASAKI KL650A Dual Sport, 5,000 miles.
- (2) 2007 SUZUKI DRZ650 Dual Sport Motorcycle.
- 2006 HONDA Rancher ES Quad.

## PARATRANSIT VANS & BUSES

- 2005 FORD E-350 Paratransit Van, gas eng., auto. trans., Ricon wheelchair lift.
- (3) 2003 MOTOR COACH D4500 57-Seat Buses, Detroit diesel eng., Allison auto. trans., Ricon wheelchair lift, non-compliant.

## ASSET SEIZURES, FLEET VEHICLES, LIGHT TRUCKS, VANS & SUVs

Government Fleet Vehicles, Partial Listing Including:

- AUTOMOBILES:** (Over 350) Vehicles Partial List to Include: (4) CHEVROLET Malibus; 2009 TOYOTA Camry; 2007 FORD Mustang GT; 2006 CHRYSLER Sebring; 2004 CHRYSLER Concorde LX; DODGE Stratus ES; FORD Contour; (25) 2011–2003 FORD Crown Victorias; (4) 2007–2010 FORD Focus; (5) 1999–2009 FORD Taurus, (2) 2007–2000 PONTIAC Grand Prix; 2012 TOYOTA Camry, hybrid; (16) 2009–2005 TOYOTA Prius, hybrid.

**PARTIAL LISTING!** Check Our Website For a Complete Listing!

## UTILITY & PICK-UP TRUCKS:

- 2002 FORD F-550 Utility Truck, w/lift gate, diesel eng., auto. trans., Tommy lift gate, CA retrofit.
  - 2010 FORD F-450 4X4 Utility Truck, diesel eng., auto. trans., Knapheide utility bed, Honda air compressor.
  - 2008 FORD F-450 4X4 Utility Truck, diesel eng., manual trans., Knapheide utility bed.
  - 1999 FORD F-350 Utility Truck, w/crane, gas eng., auto. trans., Tiger truck crane, North Bay utility body.
  - 1991 FORD F-150 Utility Truck, gas eng., auto. trans.
  - 2009 FORD F-450 Super Duty 4X4 Utility Truck w/Crane, diesel eng., auto. trans., Western Mule truck crane.
  - 2010 FORD F-450 4X4 Utility Truck, diesel eng., auto. trans., STD utility body.
  - 2002 FORD F-350 4X4 Utility Truck, gas eng., auto. trans., Diamond utility bed, winch.
  - 2002 FREIGHTLINER Grumman Olson Step Van, Cummins diesel eng., auto. trans., non-compliant.
  - 2004 FORD F-550 Utility Truck w/Crane, diesel eng., auto. trans., Diamond truck body.
- (Over 60) Pickup and Utility Trucks; 2015–2000 CHEVROLET; 2005 DODGE 3500 4X4 Crew Cab, Cummins, 6-spd. trans., 53,000 miles; GMCs from 1/2-Ton to 1-Ton, some are 4x4, extended cab, diesel, and CNG, some w/auto. cranes, lift gates and dump beds; (15–20) FORD Rangers.

**PARTIAL LISTING!** Check Our Website For a Complete Listing! (75–100) Vehicles Arriving After Publishing Deadline.

- VANS:** 1997 GMC 3500 Box Van, auto. trans., Morgan Corp. box truck body, 1999 FORD E-250 Cargo Van w/Liftgate, gas and CNG eng., auto. trans., Tommy gate; 2010 CHEVROLET 2500 Cargo Van, 2007 CHEVROLET Uplander; 2003–2009 FORD E-350 Passenger Van; 2007 CHRYSLER Town & Country Touring Passenger; 2002–2001 CHEVROLET Passenger Astros, low miles!; 1998–1999 CHEVROLET Express 3500 Cargo, CNG; 2010 FORD E-350 Passenger, flex fuel; 2008 FORD E-350 XL Super Duty Passenger; (10) 1999–2003 FORD Windstar; (3) 2003 FORD 350s, CNG; FORD E-150 Cargo; (2) 2001–1999 GMC Safari Cargo Van; 1999 DODGE Ram 1500 Cargo; (2) 2006 DODGE Grand Caravan Passenger Vans; 1998–2008 CHEVROLET Express Cargo Van; CHEVROLET Suburban.

- SUVs:** 2014–2015 FORD Explorers; (10) 2003–1996 JEEP Cherokee and Liberty; 2007 DODGE 4X4 Durango; 2015 FORD AWD Escape; (4) 2014–2003 FORD 4X4 Explorers and Expeditions; NISSAN 4X4 Pathfinder; 2001 SUBARU Outback AWD Wagon; CHEVROLET Tahoe and Blazer.

**Partial Listing, Check the Website 1stcapitolauction.com. More Vehicles Arriving After Brochure Deadline! Please Check Our Website For Additions!**

## DAY 2: RING 3 STARTS AT 11:00 A.M. IN THE WAREHOUSE

(Over 150) Lots of Coins, Money, Jewelry, Personal Property, Computers & More



**AUCTION HELD RAIN OR SHINE!**

## AUCTION CALENDAR FIRST CAPITOL THE AUCTION COMPANY

– A California Joint Venture Company –

### SOUTHERN CALIFORNIA LOCATION

PHONE (951) 657-5300 • FAX (951) 657-5244  
1450 N. Pennsylvania Ave., COLTON, CA 92324  
Website: www.theauctioncompany.net

**SATURDAY, JUNE 23  
DEADLINE: JUNE 6**

CONSTRUCTION EQUIPMENT,  
TRUCKS, TRAILERS,  
AUTOS & MORE

### NORTHERN CALIFORNIA LOCATION

PHONE (707) 552-0739 • FAX (707) 552-8613  
50 SOLANO AVE., VALLEJO, CA 94590  
Website: www.1stcapitolauction.com

**FRI. & SAT., JUNE 22 & 23  
DEADLINE: JUNE 6**

CONSTRUCTION EQUIPMENT, TRUCKS  
& TRAILERS, GOVERNMENT FLEET  
& ASSET SEIZED VEHICLES

**TERMS & CONDITIONS:** Additional terms and conditions available day of sale, or visit [www.1stcapitolauction.com](http://www.1stcapitolauction.com). A 15% Buyer's Premium will apply to all items sold!  
**LOCATION & DIRECTIONS:** 50 Solano Avenue, Vallejo, CA. Interstate 80 to 780 West. Then to second light (Solano Avenue) and left to auction site on right side. Check our website [www.1stcapitolauction.com](http://www.1stcapitolauction.com) for map.

**DAY 1: FRIDAY, APRIL 27 AT 9:00 A.M.**

Late-Model Construction, Rental Equipment, Large Trucks, Trailers, Lumber & More  
**DAY 2: SATURDAY, APRIL 28 AT 9:00 A.M.**

**RING 1:** Fence Line, (Over 500) Lots of New & Unused Lumber, Hardwood Flooring, Fencing & Building Materials, New & Unused Equip., Hand & Power Tools

**RING 2 at 10:00 A.M.:** Asset Seizures, Real Estate, (350+) Gov't Fleet Vehicles, Light Trucks, Boats, Buses & Motorcycles

**RING 3 at 11:00 A.M.:** Coins, Money, Jewelry, Personal Property, Computers & More

**INSPECTION:** Thursday, April 26 from 9:00 A.M. – 4:30 P.M. No inspection during auction.  
**REGISTRATION:** You must register in order to bid. A valid driver's license is required for registration. If you are registering as a dealer you will need a copy of your Dealer's License and Seller's Permit. Your bidder number is a contractual document and you are responsible for anything sold to that number. Guard it carefully. No one under the age of 21 years old is allowed on any piece of equipment. NO CHILDREN OR PETS.

**For complete terms and conditions visit [www.1stcapitolauction.com](http://www.1stcapitolauction.com)**





# FIRST CAPITOL AUCTION INC.

COMMERCIAL LIQUIDATORS & APPRAISERS

50 Solano Ave., Vallejo, CA 94590

For more information call (707) 552-0739

Visit our Website at [www.1stcapitolauction.com](http://www.1stcapitolauction.com)

or e-mail us at: [auctioncap@aol.com](mailto:auctioncap@aol.com)

Liquidators & Appraisers

CSL #A1621

**2-DAY ★ NO MINIMUM ★ NO RESERVE**

## PUBLIC AUCTION

Bay Area Contractors ★ Herc Rentals ★ Over 35  
Gov't Agencies & Municipalities

**DAY 1: FRIDAY, APRIL 27 AT 9:00 A.M.**

★ Late-Model Construction, Rental Equipment, Large Trucks,  
Trailers, Lumber & More ★

**DAY 2: SATURDAY, APRIL 28 – 3 RINGS  
STARTING AT 9:00 A.M.**

**RING 1:** Fence Line, (Over 500) Lots of New & Unused Lumber,  
Hardwood Flooring, Fencing & Building Materials, New &  
Unused Equip., Hand & Power Tools **RING 2:** Asset Seizures,  
Real Estate, (350+) Gov't Fleet Vehicles, Light Trucks, Boats,  
Buses & Motorcycles **RING 3:** Coins, Money, Jewelry,  
Personal Property, Computers & More

50 SOLANO AVENUE, VALLEJO, CALIFORNIA 94590

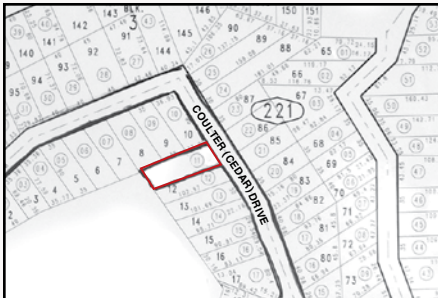
QS-0042671



Presorted  
First Class Mail  
U.S. Postage  
PAID  
Eugene, Oregon  
Permit No. 17



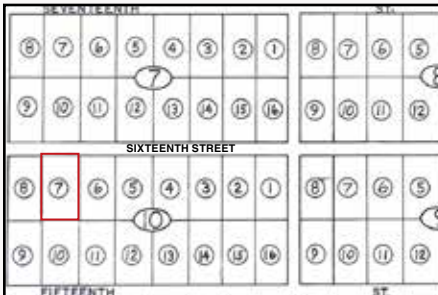
## REAL ESTATE TO BE SOLD AT THE FIRST CAPITOL AUCTION FACILITY Before the Fleet Vehicles (Approx. 9:30 A.M.)



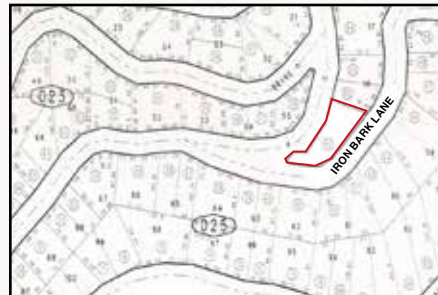
**PROPERTY 1**  
Lot Near Lake Arrowhead  
#1 Lake Resort  
in Southern California  
Lot #11,  
APN #0330-222-11-0-000  
San Bernardino County,  
California  
All Taxes Paid



**PROPERTY 3**  
1-1/4 Acres  
Near Delta Lake  
in California Pines  
Lot 32, Block 18, Unit 5,  
APN #041-502-011-000  
Modoc County, California  
All Taxes Paid



**PROPERTY 2**  
1 Acre on 16th Street in  
Meadow Valley Ranchos  
Next to Humboldt River  
Near S. Fork Reservoir  
APN #067-010-007  
Elko, Nevada  
All Taxes Paid



**PROPERTY 4**  
Lot Near Lake Arrowhead  
#1 Lake Resort  
in Southern California  
Tract 1921,  
Larchmont Lot 11, Block 1,  
APN #0330-222-11-0-000  
All Taxes Paid

**Inspection  
Available  
the Week of  
April 23-27, 2018  
Only!**



# FIRST CAPITOL AUCTION INC.

LIQUIDATORS & APPRAISERS ★ (707) 552-0739 ★ Vallejo, CA